

# Grace

## sofa

### Technical Data

- Seat, backrest – moulded foam, upholstered;
- Base – oval-shaped profile 40 × 20 × 2 mm, tube Ø22 mm, wall thickness 2 mm, CNC-bent, powder coated;
- Legs – finished with material feet, colour: black;
- Dimensions: GR02: 1280 x 650 mm, h. 760 mm, seat height 431 mm;
- Dimensions: GR03: 1860 x 650 mm, h. 760 mm, seat height 431 mm;

### Selected configuration

**Configuration:** GR02

1280x650mmW:1280mm D:650mm

H:760mm

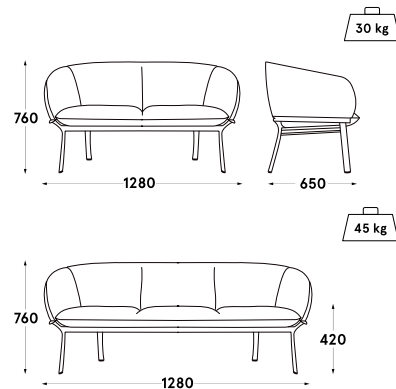
**Fabric:** Charles – 100% poliester

**Colour:** C-18 Rust-brown

**Frame:** Beige semi-matt RAL

0608005

**Weight:** 31kg



### Guarantee

.mdd products – 5 years.

Electrical components and fabric – 2 years.

### Certificates

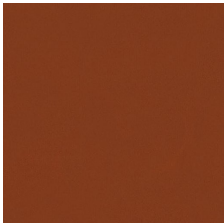


### Sustainability

- Sustainable production – we are not indifferent to the environmental impact of our furniture, therefore we provide the essential information on the life cycle of our products through the Environmental Product Declarations (EPD).

Fabric technical data

Charles



<b>Material</b>	polyester 100%
<b>Weight</b>	433g/m2
<b>Abrasion resistance rub</b>	90,000 cycles Martindale, EN ISO 12947-1, 2
<b>Colour fastness to light</b>	ISO 105 - B02 4
<b>Pilling resistance</b>	EN ISO 12945-2 5
<b>Colour fastness to rubbing</b>	dry: 4-5, wet: 4-5, scale 1-5, max. 5 - EN ISO 105x12
<b>Flammability</b>	EN 1021, 1