

P47 CT-L Coffee Table

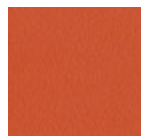
design Franco Poli, 2021

The P47 coffee table is a piece of furniture that speaks of style and functionality in the most refined environments. With a transversal look, thanks to the possibility of chromatic customization, it adds a touch destined to be noticed.



Colors and Materials

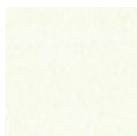
Structure



Papaya orange steel



Light blue steel



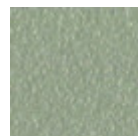
White steel



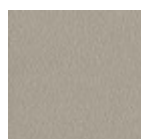
Ocean blue steel



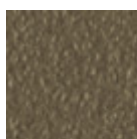
Bronze Steel



Sand steel



Ash metal



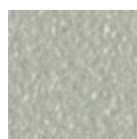
Fango steel



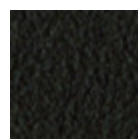
Golden yellow metal



Pastel yellow steel



Light grey steel



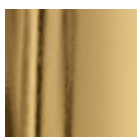
Brown steel



Black steel



Ocher steel



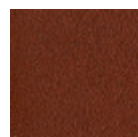
Golden Champagne



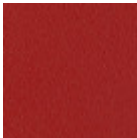
Facepowder pink
steel



Red steel



Red bulgaro
textured metal



Cherry red metal



Pine green steel



Sage green steel



Black Nickel

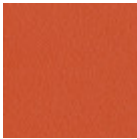


Pink Gold

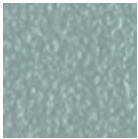


Golden bronze

Coating



Metallo arancio papaya



Metallo azzurro



Metallo bianco



Metallo blu oceano



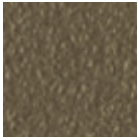
Metallo Bronzo



Metallo cenere



Metallo corda



Metallo fango



Metallo giallo oro



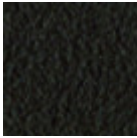
Metallo giallo pastello



Metallo grafite



Metallo grigio chiaro



Metallo Marrone



Metallo nero



Metallo ocre



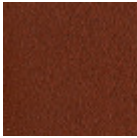
Oro champagne



Metallo rosa cipria



Metallo rosso



Metallo rosso bulgaro materico



Metallo rosso ciliegia



Metallo verde pino



Metallo verde salvia



Nichel Nero



Oro rosa



Bronzo dorato

Extensions

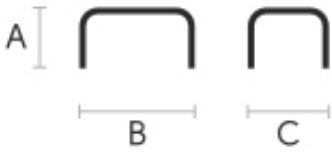


TK Hide
9 Colors



Tuscan hide
3 Colors

Dimensions



| | cm | inch |
|---|----|------|
| A | 40 | 15.7 |
| B | 60 | 23.6 |
| C | 58 | 22.8 |