



Alfred

design Midj R&D, 2017

Extendable table with sled base in lacquered steel. Top in crystalceramic or antiscratch glass.



Finishing and Materials

Base



Sand Steel

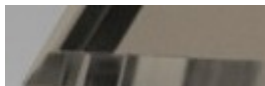


Grafite Steel



Brown Steel

Top



Matt Sand Antiscratch Glass



Matt Graphite Antiscratch Glass



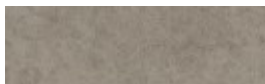
Lead Crystalceramic



Cement Savoia Crystalceramic

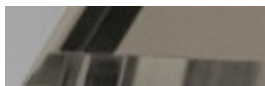


Emperador Marble Crystalceramic



Oxide Sand Crystalceramic

Extensions



Matt Sand Antiscratch Glass



Matt Graphite Antiscratch Glass



Lead Crystalceramic



Cement Savoia Crystalceramic

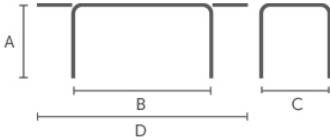


Emperador Marble Crystalceramic



Oxide Sand Crystalceramic

Dimensions



Volumetric Details

Weight 153
Volume 0.68 mc
Package 5

Dimension	A (cm) (inch)	B (cm) (inch)	C (cm) (inch)	D (cm) (inch)
160x90	75 (29.5)	160 (63)	90 (35.4)	240 (94.5)
200x100	75 (29.5)	200 (78.7)	100 (39.4)	300 (118.1)

Gallery

