



Calla P M_T PP Armchair

design Fabrizio Batoni, 2019

Calla armchair with steel sled base. Polypropylene seat. The version with lacquered base in matt finish and polypropylene seat is suitable for outdoor use. Optional: cushion upholstered in leather, faux leather or fabric, for indoor use only.

When the plastic shell and cushion merge into a delicate synergy, the design becomes more precious and the comfort even greater.

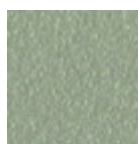


Colors and Materials

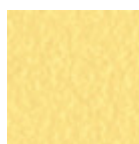
Structure



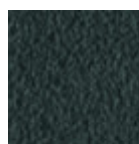
White Steel



Sand Steel



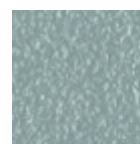
Pastel Yellow Steel



Grafite Steel



Black Steel



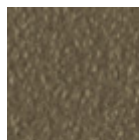
Light blue steel



Ocean Blue Steel



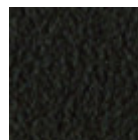
Bronze Steel



Fango Steel



Light Grey Steel



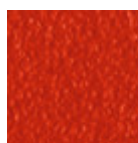
Brown Steel



Ocher Steel



Facepowder Pink Steel



Red steel



Sage Green Steel

Coating



Polypropylene

9 Colors

Extensions



Bubble Fabric
14 Colors



Carabù Fabric
15 Colors



Cotton Club Fabric
13 Colors



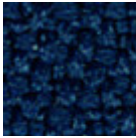
Fenix Wool Fabric
13 Colors



Hot Fabric
14 Colors



Main Line Flax Fabric
16 Colors



Mirage Fabric
6 Colors



Scubidù Fabric
10 Colors



Second Fabric
11 Colors



Visual Fabric
11 Colors



Velvet Superb
15 Colors



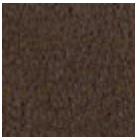
Secret Faux Leather
22 Colors



Vintage Faux Leather
12 Colors



Fiore Leather
18 Colors



Vintage Leather
4 Colors

Dimensions

Dimensions

Volumetric Details

Weight 7 Kg
Volume 0.26 mc
Package 1

Image not found or type unknown

	cm	inch
A	78	30,7
B	52	20,5
C	55	21,7
D	46	18,1
E	68	26,8