

Posidonia coffee table

by Ramón Esteve

Posidonia, the new collection of **designer outdoor furniture** is capable of creating an atmosphere of serenity and balance, awakening the user's sensibility and inviting them to enjoy every moment.



Info

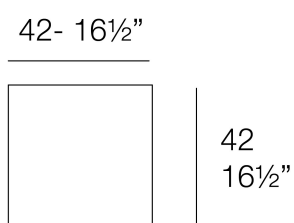
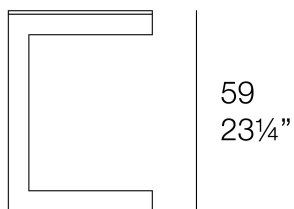
Description

The Posidonia coffee table, designed by Ramón Esteve, stands out for its thermo-lacquered aluminium structure, prepared to face different weather conditions, offering durability and lightness.

Its HPL surface is highly resistant to scratches and is available in different sizes to adapt to different spaces.

In addition, a wide palette of colours allows you to create customised combinations of HPL surface and aluminium structure.

Weight: 2.58 Kg



POSIDONIA Mesa 42x42x59
POSIDONIA Coffee Table 16½"x16½"x23¼"

Finishes

finishes

ALUMINIUM
Ref. 54708



white



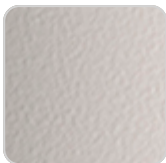
british gray



traffic gray



black



ecru



crema



castoro fiber



cacao



notte blue



modo green



pickle



almond



red



purjai red



melon



mostaza



Lacquered aluminium profile.

tabletops

Solid Core
Ref. 54708HPL



notte blue



british gray



traffic gray



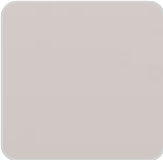
crema



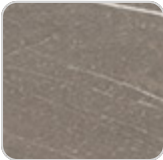
yule brown



castoro fiber



piombo gray



pulpis gray



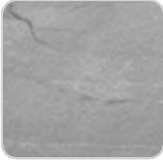
cacao



kandia black



modo green



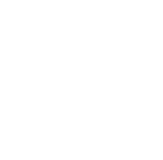
yule gray



purjai red



gioia bianco



gioia bianco

Solid Core wood
Ref. 54708HPL



oak1



oak2

Ambients

