



Calla P65 M PP Stool

design Fabrizio Batoni, 2019

Bar stool with four legs base in lacquered steel and plastic shell.
Optional: cushion upholstered in fabric, leather or faux leather. The stool in the version with plastic shell is also available in the version for outdoor use.



Colors and Materials

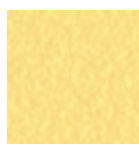
Structure



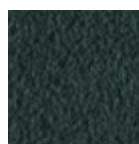
White Steel



Sand Steel



Pastel Yellow Steel



Grafite Steel



Black Steel



Light blue steel



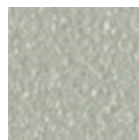
Ocean Blue Steel



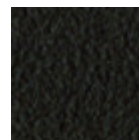
Bronze Steel



Fango Steel



Light Grey Steel



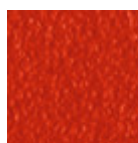
Brown Steel



Ocher Steel



Facepowder Pink Steel

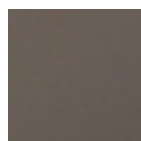


Red steel



Sage Green Steel

Coating



Polypropylene

9 Colors

Dimensions

Dimensions

Image not found or type unknown

	cm	inch
A	98	38,6
B	52	20,5
C	52	20,5
D	66	26
E	88	34,6