



Charlotte table

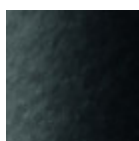
Charlotte table lamp with direct light. The structure and the lampshade are made of black metal and the lampshade can be rotated as desired. On the electric power cable there is the on / off switch. The cable has a length of 1.5m (59.1m) and is covered with black silk.

The lamp is part of the Charlotte collection which also includes floor and suspension variants. The collection is inspired by the Bauhaus current, proposes geometries simplified to the maximum, almost abstract, easily legible with respect to space.



Colors and Materials

Structure



Black steel

Dimensions

Dimensions
mean not found or type unknown

	cm	inch
A	42	16.5
B	22	8.7
C	12	4.7

Volumetric Details

Weight 2 Kg

Volume 0.02 mc

Package 1