



# Istar DPA

design Midj R&D, 2012

Task swivel armchair with high backrest and a five-ways chrome base.  
Fitted with gas-lift mechanism for height adjustment. Seat upholstered in leather, ecoleather, fabric or custom's fabric.



## Finishing and Materials

### Structure



Chrome

### Coating



**Secret Ecoleather**  
22 colors



**Vintage Ecoleather**  
11 colors



**Vintage Leather**  
4 colors



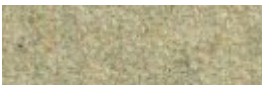
**Fiore Leather**  
18 colors



**Pix Fabric**  
9 colors



**Mirage Fabric**  
17 colors



**Fenix Wool Fabric**  
15 colors



**Long Life Fabric**  
13 colors



**Bubble Fabric**  
14 colors



**Hot Fabric**  
14 colors



**Velvet Superb**  
18 colors

## Dimensions



Dimension	cm	inch
A	105/114	41.3/44.9

Dimension	cm	inch
B	65	25.6
C	65	25.6
D	48/57	18.9/22.4
E	70/79	27.5/31.1

## Volumetric Details

**Weight** 12  
**Volume** 0.30 mc  
**Package** 2

## Downloads

3D Istar DPA (zip) - <http://www.midj.com/images/uploads/resources/istar-dpa-3d.zip>

## Materials Certifications

### Secret Ecoleather

MARTINDALE: 60'000 cycles COMPOSITION: 76% PVC - 2% PU 22% PES FIRE RESISTANCE: EN 1021-2:2006 UNI 9175 CLASSE 1 IM BS5852-1:1979 part 1 TB 117:2013 PROPRIETIES AND ADVANTAGES Secret is a fire retardant ecoleather totally made in Italy. It contains high resistant polymers of new conception more resistant to sun exposure and to use. Secret has been designed to realize soft interior upholstery: its elastic backing, made of polyester, allows it to adapt to the new geometries of upholstery with greater assurance of strength and durability. CLEANING INSTRUCTIONS Dust gently and in case of light stains pass the surface with a damp cloth or a neutral detergent, rinse with water without squeezing. Let the fabric dry inside out avoiding direct exposure to the sunlight. Iron to the reverse at low temperature. The following instructions are recommended for small located and more obstinate stains (oil, fat, cosmetics, ink, coffee, liquor, chewing-gum etc.): dissolve immediately with clear ethylic alcohol diluted in water to 20%, dab and then treat with a neutral detergent solution. Rinse abundantly. To avoid permanent stains, the lighter colours of the article should not be brought into contact with textiles and clothing coloured with unfixed dyes. We cannot guarantee the ability to remove unknown dyes from light coloured product.

### Vintage Ecoleather

MARTINDALE: 50'000 cycles COMPOSITION: 80% PVC; 2% PU; 18% PES FIRE RESISTANCE: UNI 9175: classe 1IM EN 1021-2 PROPRIETIES AND ADVANTAGES This ecoleather's surface is made using a microscopic texture which makes it similar to natural leather to the touch while keeping the typical characteristics of technical fabric such as endurance and ease of use. The Vintage Ecoleather features a special mesh fabric construction, slightly elastic, that makes it easily adaptable to the new modern shapes of upholstered furniture and guarantees long life. Soft, enveloping and fire resistant, this fabric adapts to contract or residential spaces. CLEANING INSTRUCTIONS Dust gently and in case of light stains pass the surface with a damp cloth or a neutral detergent, rinse with water without squeezing. Let the fabric dry inside out avoiding direct exposure to the sunlight. Iron to the reverse at low temperature. The following instructions are recommended for small located and more obstinate stains (oil, fat, cosmetics, ink, coffee, liquor, chewing-gum etc.): dissolve immediately with clear ethylic alcohol diluted in water to 20%, dab and then treat with a neutral detergent solution. Rinse abundantly. To avoid permanent stains, the lighter colours of the article should not be brought into contact with textiles and clothing coloured with unfixed dyes. We cannot guarantee the ability to remove unknown dyes from light coloured product.

### Vintage Leather

PROPRIETIES AND ADVANTAGES This leather with a distressed effect comes from Bovine of European origin. This high quality article is obtained starting with nubuck leather, which is slightly levelled with aniline and hand rubbed to give an aged effect. It has a very warm and silky feel. CLEANING INSTRUCTIONS Vintage leather offers the benefit of improving in the course of time and with wear, both in terms of softness and sheen. Remove stains with a damp cloth and leave to dry away from sunlight. Do not use chemical detergents.

### Fiore Leather

COMPOSITION: 100% pelle FIRE RESISTANCE: BS 5852:1979 BS EN 1021-1-2:2006 PROPRIETIES AND ADVANTAGES The Fiore leather is a bovine leather of european origin, corrected and embossed for enhanced grain consistency. Finished using water based system. This product has a pigmented and protective top coat, with a soft handle and a silky matt finish. CLEANING INSTRUCTIONS Grain leather offers the benefit of improving in the course of time and with wear, both in terms of softness and sheen. To remove stains, it is advisable to rub the affected area with a clean, soft cloth or use a solution of water and a little neutral soap that must be applied gently onto the stain using a damp cloth. Rinse thoroughly and leave to dry away from direct sunlight.

### Pix Fabric

MARTINDALE: 50'000 cycles COMPOSITION: 100% Polyester FIRE RETARDANT FABRIC: Classe 1 B1 DIN 4102 M1 Fire Protection Classification: 5.2 BS 5852 Crib 5 using a CM Foam 35 kg/cu.m EN 1021

Part.1-2 using a CM Foam 35 kg/cu.m EN 13773 Burning Behaviour: Class 1 EN 13501-1 esp. 1,2: B-s1, d0 USA Calif. Bull 117 June 2013 IMO 688 (17) - IMO 563 (14) - IMO 653 (16) IMO RES.A. 652 (16) FTP Code MSC 61 (67) Annex 1 Part 8 - FR PU flexible foam, 35 kg/mq. FAR.25853 Classification: yes PROPRIETIES AND ADVANTAGES Classic canvas with a high abrasion resistance. The Pix fabric it's very well known for its characteristics of natural aspect and it has passed almost all the tests against fire for upholstery, office and contract area. The main properties of hand and resistance, which made the article appreciated for decades, have now a new spirit, which leads the product in the future. The natural hand and aspect of this yarn, realize an unique fabric. CLEANING INSTRUCTIONS Use the vacuum cleaner with smooth spout regularly, don't brush. Dust gently and in case of light stains pass the surface with a damp cloth or a neutral detergent, rinse with water without squeezing.

#### **Mirage Fabric**

Martindale: 100.000 cycles Composition: 100% Polyester Shrinking about 1% FIRE RESISTANCE Classe 1IM B1 DIN 4102 Q1 OENORM B3825 Q1 OENORM 3800 Part. 1 BS 5852 Crib 5 EN 1021 Part.1-2 Calif. Bull. 117 EN 13501 - 1 1,2 : B-s1 , d0 EN 13773 Burning Behaviour: class 1 EN ISO 6940/6941 Fire Protection Classification: 5.3 NF D 60-013:2006 AM18 FAR.25853 Classification: Yes PROPRIETIES AND ADVANTAGES Mirage is a two-way stretch fabric with crep armor, it is very resistant to abrasion and pilling. Mirage is equipped with the best certificates required for the resistance to fire. CLEANING INSTRUCTIONS We recommend to use a regular vacuum cleaner with plain tip, do not brush. For light stains, rub the surface gently with a damp cloth or use neutral fabric detergents. Leave to dry away from sunlight.

#### **Fenix Wool Fabric**

Martindale: 100.000 cycles Composition: 75% wool; 25% Polyamide FIRE RESISTANCE CLASSE 1 IM, EN 1021 Part 1-2, Calif. Bull. 117 PROPRIETIES AND ADVANTAGES The particular finish of the Fenix Wool fabric is obtained by a stabilization treatment which gives a particularly soft hand but very consistent, able to achieve excellent values of resistance to pilling and abrasion. This fabric is made from regenerated wool. The recycling allows the creation of fabrics even more varied and rich in composition with inimitable content of fantasy. The very contemporary color palette is coordinated harmoniously both for domestic and for the office sector. The fabric is produced entirely in Italy. CLEANING INSTRUCTIONS We recommend to use a regular vacuum cleaner with plain tip, do not brush. Dry cleaning is recommended. Some colorants used for garments or accessories (i.e. jeans) may the stain pale colours of this product. This tendency increases in a damp, warm environment.

#### **Long Life Fabric**

Martindale 40.000 cycles Composition: 74% Polyester, 18% Cotton, 8% Acrylic Shrinking about 1% PROPRIETIES AND ADVANTAGES The Long Life is a unique and innovative fabric for its practicality, easy care, pleasurable look and bright and trendy colors. The special treatment which comes from new generation nano-technologies makes "Long Life" transpiring and hydro and oil repellent which prevents liquids to penetrate into the tissue and therefore allows the fabric and the upholstery to remain dry, ensuring maximum hygiene. These extraordinary properties remain unchanged even after many washing machine washes. "Long Life" is a versatile fabric, ideal for contemporary habitat, which ensures a perfect balance between aesthetics and efficiency, comfort and performance, hygiene and cleanliness. CLEANING INSTRUCTIONS Coffee, milk, tea: blot with paper towels. Then remove the stain with a cloth soaked with water and neutral soap. If the stain persists wipe denatured alcohol. Ink, pen: absorb with paper towels. Then rubbing with a cloth soaked with trichlorethylene or denatured alcohol. Oil and grease: blot with paper towels. Remove the stain with a cloth soaked with trichlorethylene or perchlorethylene. Wine and Spirits: absorb with paper towels. Then remove the stain with cloth soaked with denatured alcohol. Grass, jam: Rub the stain with a cloth soaked in water. In order to remove any stains and halo, dab with paper towels and repeat the treatment with a cloth dampened with denatured alcohol.

#### **Bubble Fabric**

MARTINDALE: 35'000 cycles COMPOSITION: 100% PES FIRE RESISTANCE: BS5852:2006 (p. 11 CRIB 5) EN1021-1 EN1021-2 UNI 9175:2010 - classe 1 im PROPRIETIES AND ADVANTAGES Bubble is a polyester fabric entirely manufactured and tested in Italy which has been studied for the upholstered furniture sector. Made applying special technical finishings that reduce height and increase thickness of the geometrical shapes on the surface. This fabric is highly resistant and both its warp and weft are 100% fireproof. Since it has successfully passed the most exacting reaction to fire tests, it can be used in the professional and hospitality/ contract settings. Bubble mixes together the elegance, the embracing materials and the prestige of traditional home fabrics with the resistance and the high technical performances typical of contract textile.

#### **Hot Fabric**

MARTINDALE: 45'000 cycles COMPOSITION: 100% PES FIRE RESISTANCE: BS5852:2006 (p. 11 CRIB 5) EN1021-1 EN1021-2 UNI 9175:2010 - 1 IM PROPRIETIES AND ADVANTAGES Hot is a polyester fabric entirely manufactured and tested in Italy which has been studied for the upholstered furniture sector. Special dying methods are used to provide volume to Hot fabrics and make them extremely soft. This fabric is highly resistant and both its warp and weft are 100% fireproof. Since it has successfully passed the most exacting reaction to fire tests, it can be used in the professional and hospitality/ contract settings. Hot mixes together the elegance, the embracing materials and the prestige of traditional home fabrics with the resistance and the high technical performances typical of contract

textile. CLEANING INSTRUCTIONS Pen: treat immediately using denaturated colorless alcohol. Brush then using neutral detergent and put in washing-machine. Milk, butter and oil: absorb immediately using blotting paper. Brush then using neutral detergent and put in washing-machine. Drinks: rinse immediately with abundant water and neutral soap. Put then in washing-machine. Adhesives and chewingum: harden the stain using some ice, remove the residues, apply a lubricant solution and let it dry. If necessary, repeat the operation and put then in washingmachine. Food debris: brush with water and neutral soap or with alcohol clituted in water at 20%. Put then in washing-machine.

#### **Velvet Superb**

MARTINDALE: 60'000 cycles COMPOSITION: 100% PES FR FIRE RESISTANCE: EN 1021-1 EN 1021-2 UNI 9175 CLASSE 1 IM UNI 9177 CLASSE 1 IM BS 5852 – CRIB 5 NF 92.503 – M1 DIN 4102 – B1 PROPRIETIES AND ADVANTAGES Superb, it's the velvet from lively and bright colours. Superb is soft yet lasting, resistant to wear, suitable for both public settings and home. Superb is a timeless velvet; it adapts to every style no matter if classic or modern. It is fireproof and easy to maintain. Superb can be used to make armchairs, sofas, chairs, upholstered furniture or obtain their type approval under the different regulations around the word. CLEANING INSTRUCTIONS PEN: Treat immediately using denaturated colorless alcohol. Brush then using neutral detergent and rinse. MILK, BUTTER AND OIL: Absorb immediately using blotting paper. Brush then using neutral detergent and rinse. DRINKS: Rinse immediately with abundant water and neutral soap. ADHESIVE AND CHEWINGUM: harden the stain using some ice, remove the residues, apply a lubricant solution and let it dry. If necessary repeat the operation. FOOD DEBRIS: brush with water and neutral soap or with alcohol diluited in water at 20%.