

# Pointhouse

# GIULIA

Design **Pointhouse**

**Scheda tecnica**  
***/ Technical sheet***



## Sedia in tubolare metallico a sezione rettangolare con seduta imbottita, rivestita in ecopelle o tessuto

Giulia è la sedia perfetta per la zona living, grazie alle gambe in metallo abbinabili alle strutture dei tavoli e alla seduta imbottita in ecopelle e tessuto. Semplicità e versatilità la rendono una sedia adatta anche a spazi pubblici come ristoranti o bar.

Disponibile con due diverse altezze di schienale, H 95 cm e 87 cm.

## / Chair with rectangular section tubular structure and upholstered seat, covered with similar leather or fabric

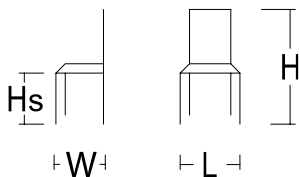
Giulia is the perfect chair for the dining table, thanks to the metallic legs that can be matched with the same finish as the table's, and similar leather or fabric upholstered seat. Simplicity and versatility make this chair suitable also for public spaces like restaurants or bars.

Available in two different heights, H 95cm and 87cm.

### MISURE / SIZE:

GIULIA BASSA **L.40XW.39XH.87**

GIULIA ALTA **L.40XW.43XH.95**



### PESO & IMBALLO / WEIGHT & PACKING:



Numero colli  
Boxes number

#### GIULIA BASSA

Box: 96x51x63  
pcs. 2  
m3 0,308  
tot. Kg. 13,6

#### GIULIA ALTA

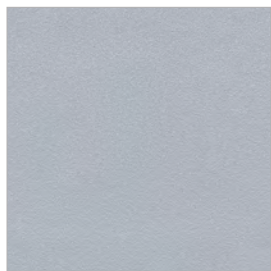
Box: 100x51x63  
pcs. 2  
m3 0,321  
tot. Kg. 14,2

**FINITURE / FINISHES:**

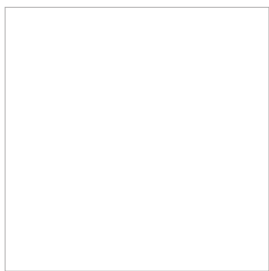
**Struttura e gambe / Structure and legs:**

Metallo verniciato  
*Painted metal*

*\*Solo per fusto Eva 1 ed Eva 4  
Only for Eva 1 and Eva 4 structures*



**02** GRIGIO ALLUMINIO  
ALUMINIUM GREY



**06** BIANCO OPACO  
MATT WHITE



**07** NERO OPACO  
MATT BLACK



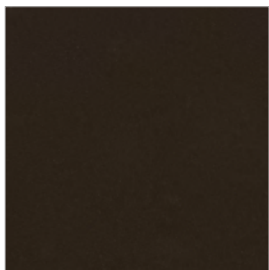
**18** GRIGIO SILVER  
SILVER GREY



**22** TORTORA  
DOVE GREY



**24** BRONZO  
BRONZO



**0G** GHISA  
CAST IRON



**0P** GRIGIO PIOMBO OPACO  
MATT LEAD GREY

**FINITURE / FINISHES:**

**Seduta / seat:**

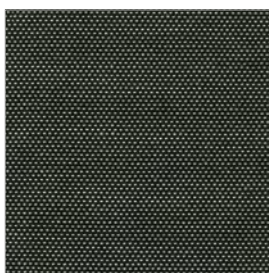
Tessuto / Ecopelle / Pelle

Fabric / Similar leather / Leather

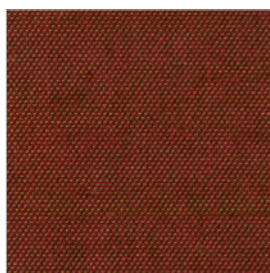
**Tessuto Angel Trick / Angel Trick fabric**



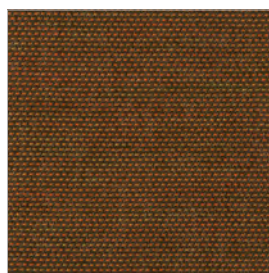
**T101**



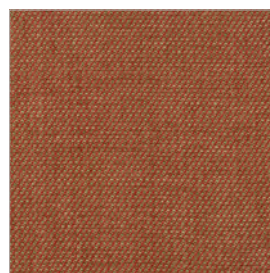
**T221**



**T301**



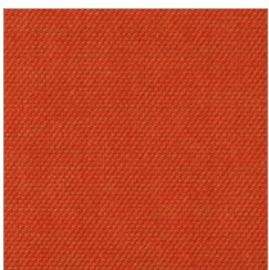
**T302**



**T303**



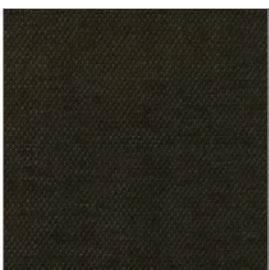
**T304**



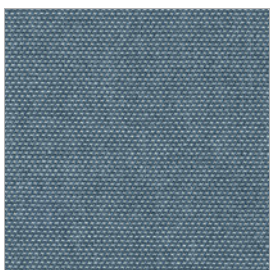
**T306**



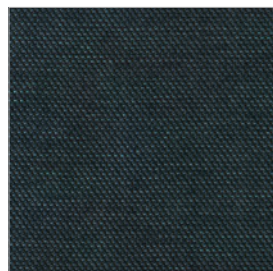
**T400**



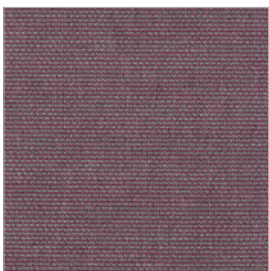
**T406**



**T701**



**T702**



**T703**



**T704**



**T801**



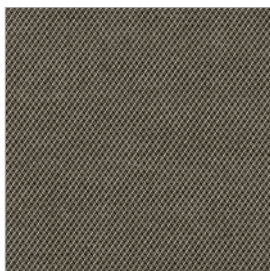
**T803**



**T204**



**T405**



**T602**



**T900**



# abitex

abitex srl  
via del cristo 84  
33044 manzano  
ud – italy

t +39 0432 746060  
www.abitex.eu  
info@abitex.eu

# angel trick 08163



## IT

### codice doganale

54072011.

### utilizzo

tende, imbottiti.

### caratteristiche

100% polipropilene, altezza cm  $\pm$  140,  
peso  $\pm$  350 gr/m<sup>2</sup>.

### tintura

il prodotto é tinta in massa.

### lunghezza pezze

circa 35 mtl.

### abrasione

50.000 cicli, ISO 12947-2.

### solidità alla luce

4-5, ISO 105 B02.

### solidità allo sfregamento

secco 5, umido 4/5, ISO 105 X12.

### resistenza alla cucitura

ordito 3 mm, trama 2 mm, ISO 13936-2.

### pilling

4-5, ISO 12945-2.

### resistenza al fuoco

1IM - UNI 9175; EN 1021 1/2; BS 5852 crib 5;  
NF D 60 013; California TB 117-2013;  
IMO FTP Code 307 part 8.

### attenzione

sono ammesse leggere differenze di colore tra differenti partite.

## EN

### customs code

54072011.

### use

curtains, upholstered furniture.

### features

100% polypropylene, width cm  $\pm$  140,  
weight  $\pm$  350 g/m<sup>2</sup>.

### dyeing

solution dyed product.

### roll length

approx. 35 lm.

### abrasion resistance

50.000 rubs, ISO 12947-2.

### colour fastness to light

4-5, ISO 105 B02.

### fastness to rubbing

dry 5, wet 4/5, ISO 105 X12.

### seam slippage

warp 3 mm, weft 2 mm, ISO 13936-2.

### pilling

4-5, ISO 12945-2.

### fire resistance

1IM - UNI 9175; EN 1021 1/2; BS 5852 crib 5;  
NF D 60 013; California TB 117-2013;  
IMO FTP Code 307 part 8.

### attention

slight colour differences between different batches are allowed.



fireproof



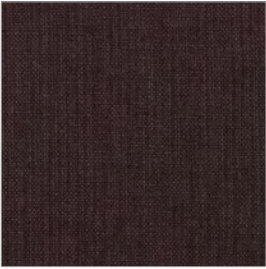
imo-med



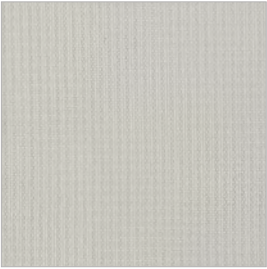
Tessuto Flash Nativa /Flash Nativa fabric



F001



F002



F101



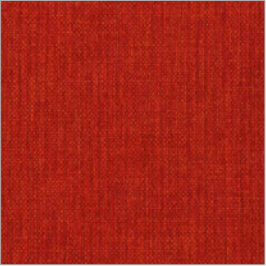
F200



F300



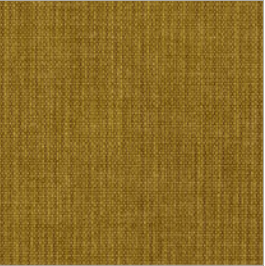
F301



F305



F403



F500



F601



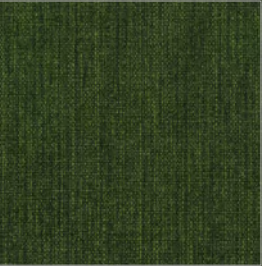
F700



F705



F707



F800



F804



F402



F600



F602



# abitex

abitex srl  
via del cristo 84  
33044 manzano  
ud – italy

t +39 0432 746060  
www.abitex.eu  
info@abitex.eu

# flash nativa

## 08091



### IT

**codice doganale**

54072011.

**utilizzo**

imbottiti.

**caratteristiche**

100% polipropilene, altezza cm  $\pm$  140,  
peso  $\pm$  320 gr/m<sup>2</sup>.

**tintura**

il prodotto é tinta in massa.

**lunghezza pezze**

circa 35 mtl.

**abrasione**

> 70.000 cicli, ISO 12947-2.

**solidità alla luce**

4-5, ISO 105 B02.

**solidità allo sfregamento**

secco 5, umido 4/5, ISO 105 X12.

**resistenza alla cucitura**

ordito 3 mm, trama 3 mm, ISO 13936-2.

**pilling**

4-5, ISO 12945-2.

**attenzione**

sono ammesse leggere differenze di colore tra differenti partite.

### EN

**customs code**

54072011.

**use**

upholstered furniture.

**features**

100% polypropylene, width cm  $\pm$  140,  
weight  $\pm$  320 g/m<sup>2</sup>.

**dyeing**

solution dyed product.

**roll length**

approx. 35 lm.

**abrasion resistance**

50.000 rubs, ISO 12947-2.

**colour fastness to light**

4-5, ISO 105 B02.

**fastness to rubbing**

dry 5, wet 4/5, ISO 105 X12.

**seam slippage**

warp 3 mm, weft 3 mm, ISO 13936-2.

**pilling**

4-5, ISO 12945-2.

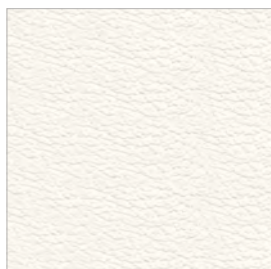
**attention**

slight colour differences between different batches are allowed.

### **Ecopelle / Similar leather**

E' un tessuto che ha l'aspetto della pelle o del cuoio ma non è realizzato con materiale animale. Esso è composto da tessuto su cui viene spalmato del materiale plastico (poliuretano o poliammide) per simulare la superficie del pellame, ciò ne determina una facile pulizia ed impermeabilità.

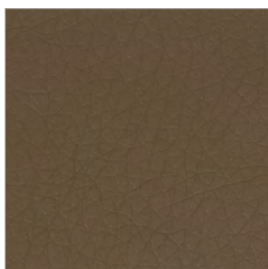
*It is a fabric that has the look of leather but it is not realized with animal material. This is composed by a fabric on which is spread some plastic material (polyurethane or polyamide) to create the leather surface, that makes it easy to clean and waterproof.*



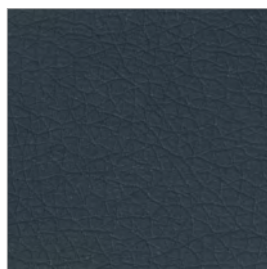
**48** BIANCO  
WHITE



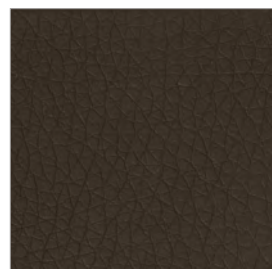
**49** NERO  
BLACK



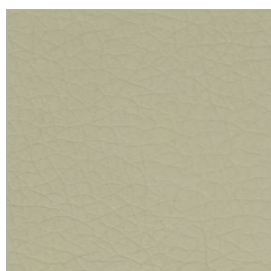
**50** TABACCO  
TOBACCO



**51** BLU  
BLUE



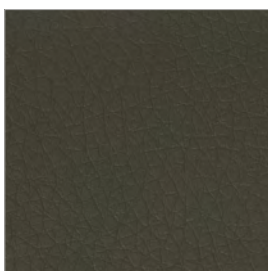
**52** TESTA DI MORO  
DARK BROWN



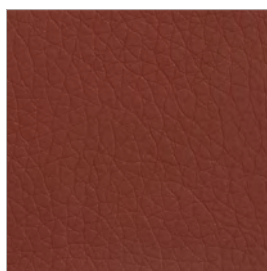
**53** CEMENTO  
CEMENT



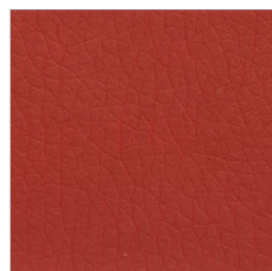
**55** CRETA  
TAUPE



**56** PIOMBO  
OLIVE GREY



**57** BORDEAUX  
BORDEAUX



**58** ROSSO  
RED