

# B-Line

B-Line S.r.l.  
Via Galileo Galilei, 13/B  
35030 - Sarmeola di Rubano (PD)  
ITALY

T. +39 049 8978245  
F. +39 049 633499  
E. [info@b-line.it](mailto:info@b-line.it)  
W. [b-line.it](http://b-line.it)

## HOOP

Design by Karim Rashid

### CARTELLA TESSUTI / FABRIC REFERENCE CHART

FP

PLATINUM FLUKSO

82% PVC  
18% PES



TFP5



TFP12



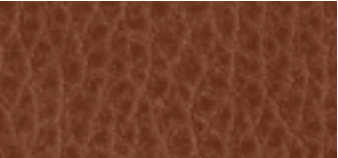
TFP22



TFP30



TFP36



TFP15

ST

STEELCUT TRIO 3 KVADRAT

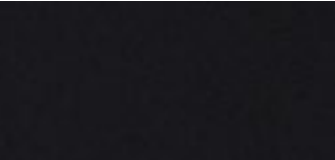
90% LANA VERGINE / NEW WOOL  
10% NYLON



TST133



TST916



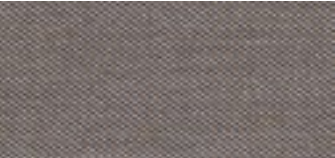
TST195



TST515



TST716

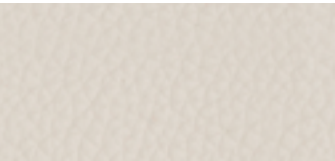


TST376

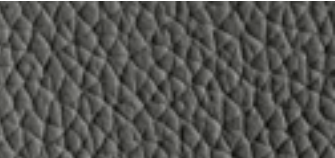
LN

PANAMA DANI

100% PELL I BOVINE EUROPEE  
100% EUROPEAN COW HIDES



LN5506



LN5290



LN5300



LN5210



LN5320



LN5400

SPECIFICHE TESSUTI  
/ FABRIC FEATURES

Platinum  
Flukso  
650 g/mq / g/sqm  
100.000 Martindale



Steelcut Trio 3  
Kvadrat  
770 g/mtl / g/lin.m  
100.000 Martindale



0575/17



Panama  
Dani  
sp / thk 1,0-1,2 mm

resistenza allo strappo  
/ tear resistance  
20 N I EN ISO 3377 -1

resistenza alla flessione  
/ flex resistance

nessuna rottura  
in 50.000 cicli  
/ no damage  
in 50.000 cycles  
EN ISO 5402