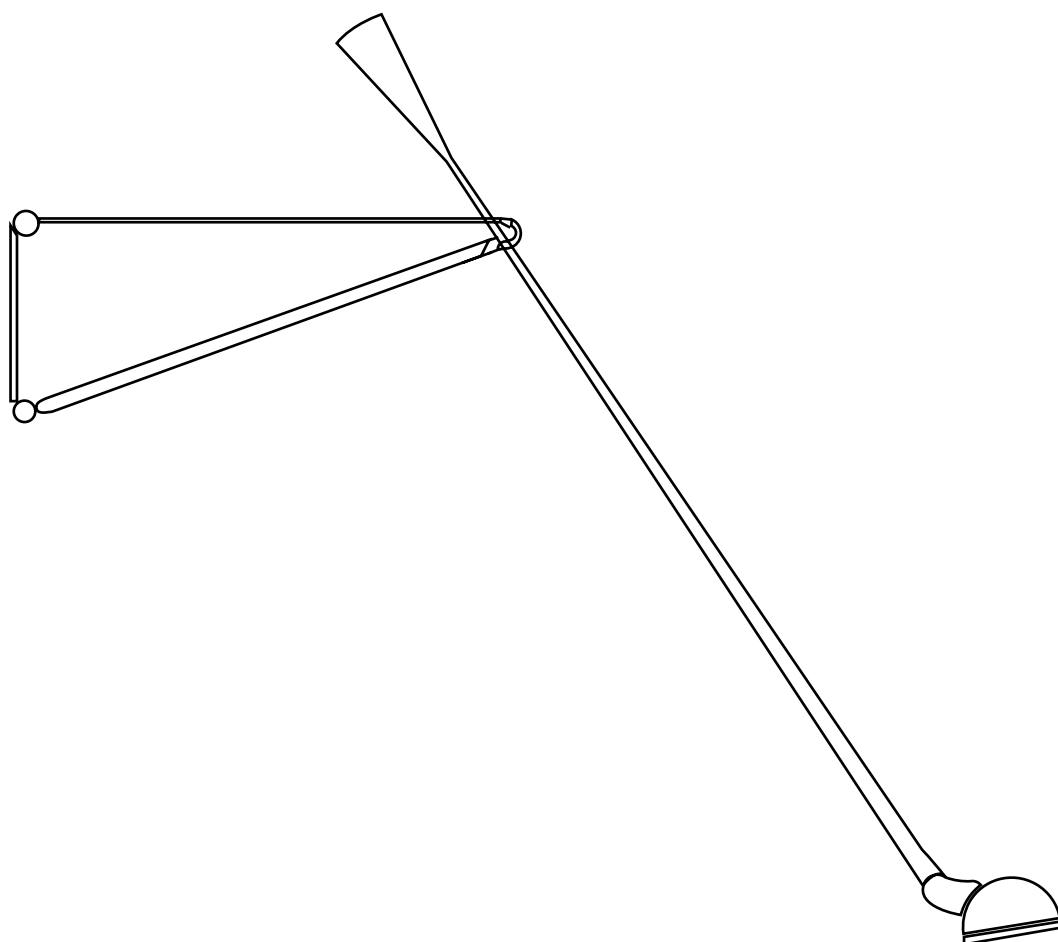


## 265

Designed by Paolo Rizzato, 1973

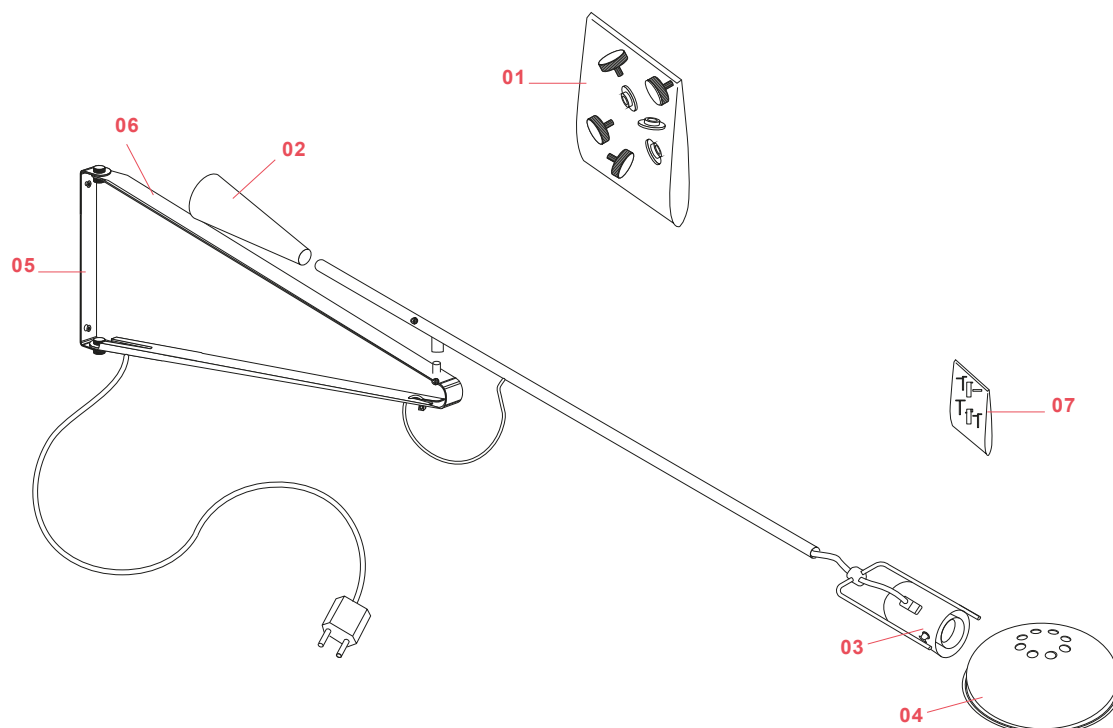
A0300030



## 265

A0300030

EN



- 01. RA0300200** – Screw kit for wall attachment
- 02. RF01856** – Black counterweight
- 03. RF01396** – Black lamp holder with reflector support assembly
- 04. RF00785** – Black reflector
- 05. RF02566** – Black wall attachment
- 06. RF02564** – Black triangle bracket support
- 07. RF11719** – Screws bag group STM3X3 10 pieces.

265 A0300030

EN

## RA0300200

SCREW SET FOR WALL ATTACHMENT



WARNING! When installing and whenever acting on the appliance, ensure that the power supply has been switched off.  
For the installation of the spare-part, it is necessary to consult a qualified electrician.

©2021 Flos - All rights reserved - [www.flos.com](http://www.flos.com)  
Flos reserves the right to introduce any changes to its own models, without prior notice.

265 A0300030

EN

## RA0300200

SCREW SET FOR WALL ATTACHMENT

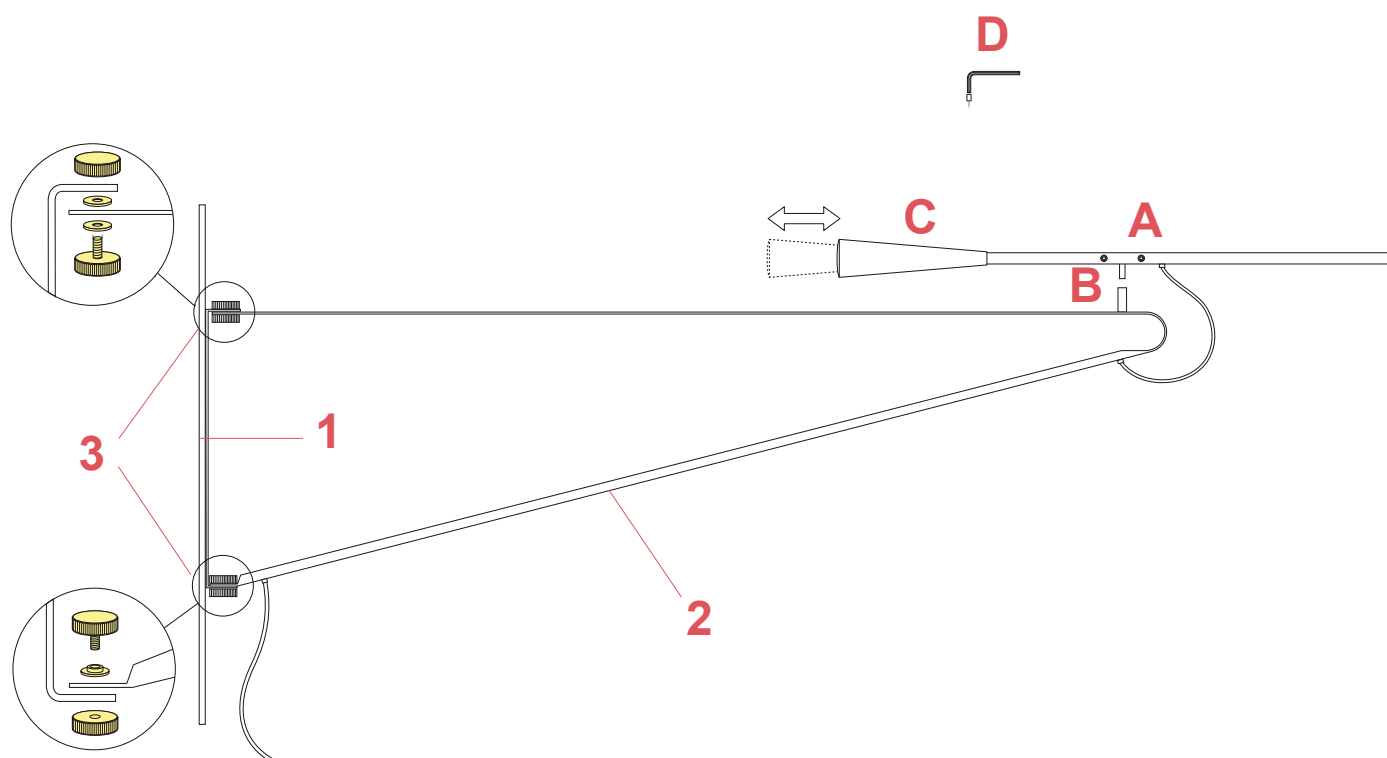


Fig.1

Assemble wall bracket (1) to the wall and lamp support (2) with grained knobs (3) positioning the nylon washers in the indicated order.

Assemble the lamp stem arm to the support (2) by inserting the pin (A) into the sleeve (B).

Once install the lamp-bulb you note that the arm stem is not straight, balance it through the counterweight. When balanced lock the screw (C) by utilizing the key (D).

**WARNING!** When installing and whenever acting on the appliance, ensure that the power supply has been switched off.  
For the installation of the spare-part, it is necessary to consult a qualified electrician.

265 A0300030

EN

## RF01856

BLACK COUNTERWEIGHT



WARNING! When installing and whenever acting on the appliance, ensure that the power supply has been switched off.  
For the installation of the spare-part, it is necessary to consult a qualified electrician.

©2021 Flos - All rights reserved - [www.flos.com](http://www.flos.com)  
Flos reserves the right to introduce any changes to its own models, without prior notice.

265 A0300030

EN

## RF01856

BLACK COUNTERWEIGHT

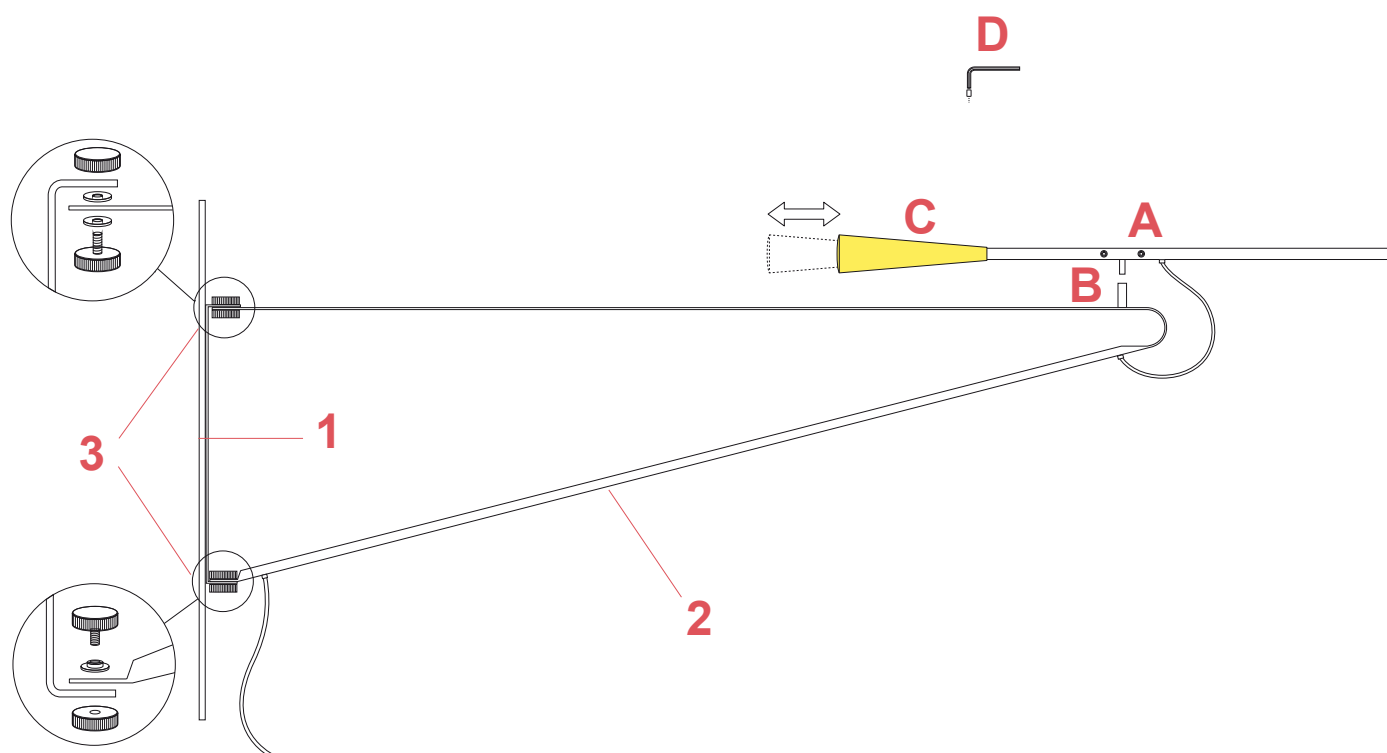


Fig.1

Assemble wall bracket (1) to the wall and lamp support (2) with grained knobs (3) positioning the nylon washers in the indicated order.

Assemble the lamp stem arm to the support (2) by inserting the pin (A) into the sleeve (B).

Once install the lamp-bulb you note that the arm stem is not straight, balance it through the counterweight. When balanced lock the screw (C) by utilizing an Allen key (D).

**WARNING!** When installing and whenever acting on the appliance, ensure that the power supply has been switched off.  
For the installation of the spare-part, it is necessary to consult a qualified electrician.

265 A0300030

EN

## RF01396

BLACK LAMP HOLDER WITH REFLECTOR SUPPORT AND ELECTRICAL CABLE ASSEMBLY



WARNING! When installing and whenever acting on the appliance, ensure that the power supply has been switched off.  
For the installation of the spare-part, it is necessary to consult a qualified electrician.

## RF01396

BLACK LAMP HOLDER WITH REFLECTOR SUPPORT AND ELECTRICAL CABLE ASSEMBLY

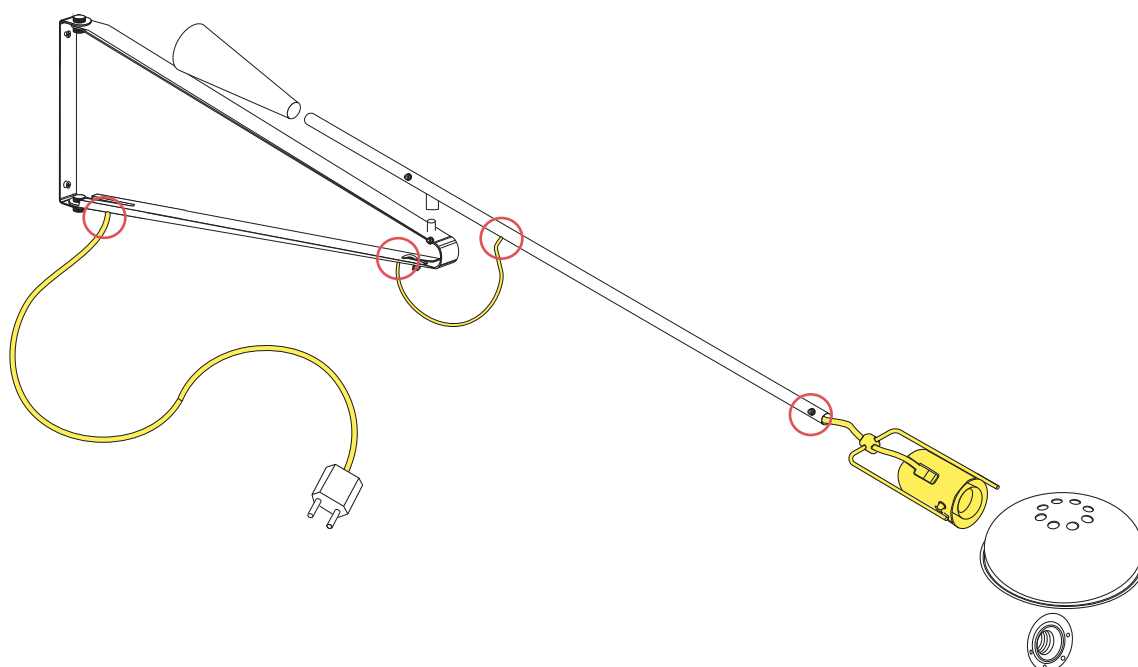


Fig.1

To assemble the reflector assembly (highlighted in yellow in the image), it is necessary to loosen all the 4 screws of the cable tighteners (refer to red circle in the image), then insert the cable in the stem (we recommend to start by inserting the electrical cable from the reflector hand side). Once inserted the cable in the stem it is necessary to insert the cable inside the triangle bracket.

**WARNING!** When installing and whenever acting on the appliance, ensure that the power supply has been switched off.  
For the installation of the spare-part, it is necessary to consult a qualified electrician.



265 A0300030

EN

## RF00785

BLACK REFLECTOR



WARNING! When installing and whenever acting on the appliance, ensure that the power supply has been switched off.  
For the installation of the spare-part, it is necessary to consult a qualified electrician.

©2021 Flos - All rights reserved - [www.flos.com](http://www.flos.com)  
Flos reserves the right to introduce any changes to its own models, without prior notice.

265 A0300030

EN

**RF00785**

BLACK REFLECTOR



Fig.1

Assemble the reflector by position it  
on the support and then lock the nut  
by rotating it clockwise.

WARNING! When installing and whenever acting on the appliance, ensure that the power supply has been switched off.  
For the installation of the spare-part, it is necessary to consult a qualified electrician.

265 A0300030

EN

## RF02566

BLACK WALL ATTACHMENT



WARNING! When installing and whenever acting on the appliance, ensure that the power supply has been switched off.  
For the installation of the spare-part, it is necessary to consult a qualified electrician.

©2021 Flos - All rights reserved - [www.flos.com](http://www.flos.com)  
Flos reserves the right to introduce any changes to its own models, without prior notice.

265 A0300030

EN

## RF02566

BLACK WALL ATTACHMENT

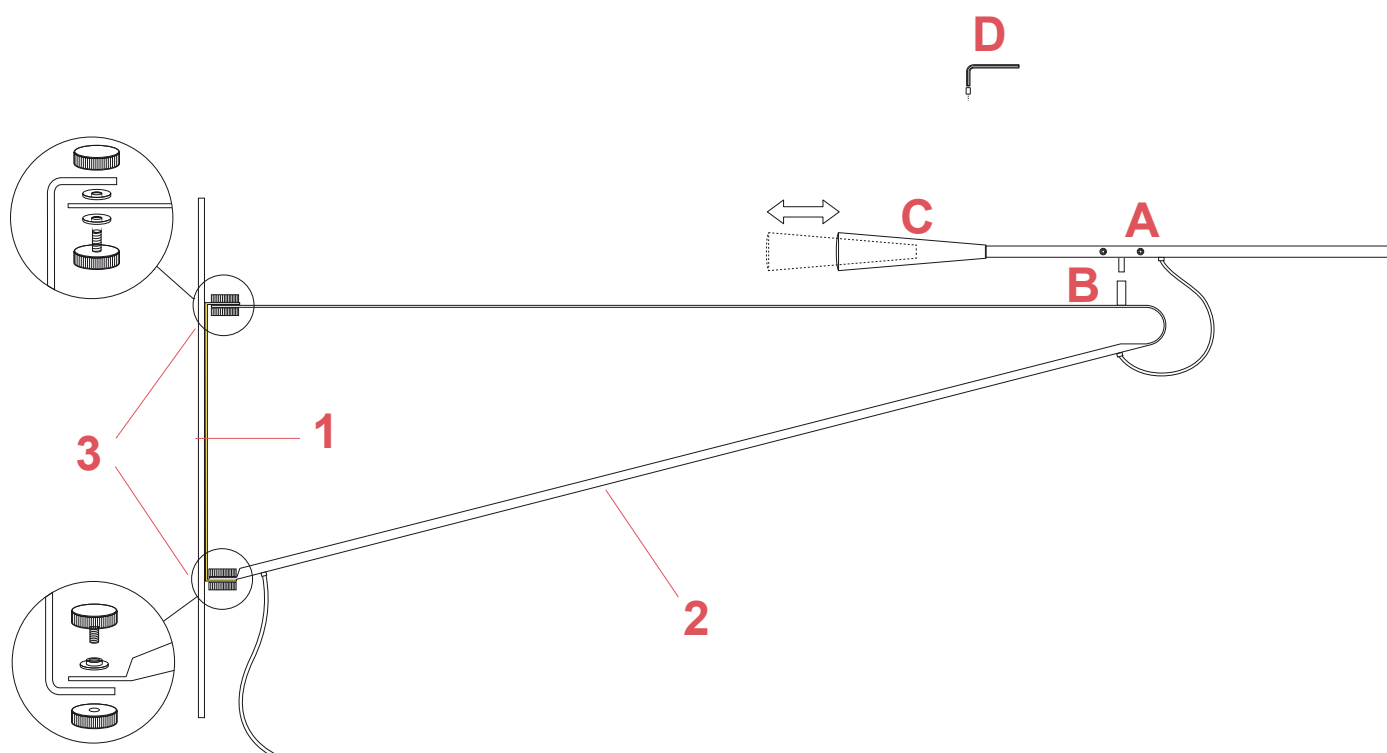


Fig.1

Assemble wall attachment (1) onto the wall and lamp support (2) with grained knobs (3) positioning the nylon washers in the indicated order. Assemble the lamp stem arm to the support (2) by inserting the pin (A) into the sleeve (B). Once install the lamp-bulb you note that the arm stem is not straight, balance it through the counterweight. When balanced lock the screw (C) by utilizing the key (D).

**WARNING!** When installing and whenever acting on the appliance, ensure that the power supply has been switched off. For the installation of the spare-part, it is necessary to consult a qualified electrician.

265 A0300030

EN

## RF02564

BLACK TRIANGLE BRACKET SUPPORT



WARNING! When installing and whenever acting on the appliance, ensure that the power supply has been switched off.  
For the installation of the spare-part, it is necessary to consult a qualified electrician.

©2021 Flos - All rights reserved - [www.flos.com](http://www.flos.com)  
Flos reserves the right to introduce any changes to its own models, without prior notice.

265 A0300030

EN

**RF02564**

BLACK TRIANGLE BRACKET SUPPORT

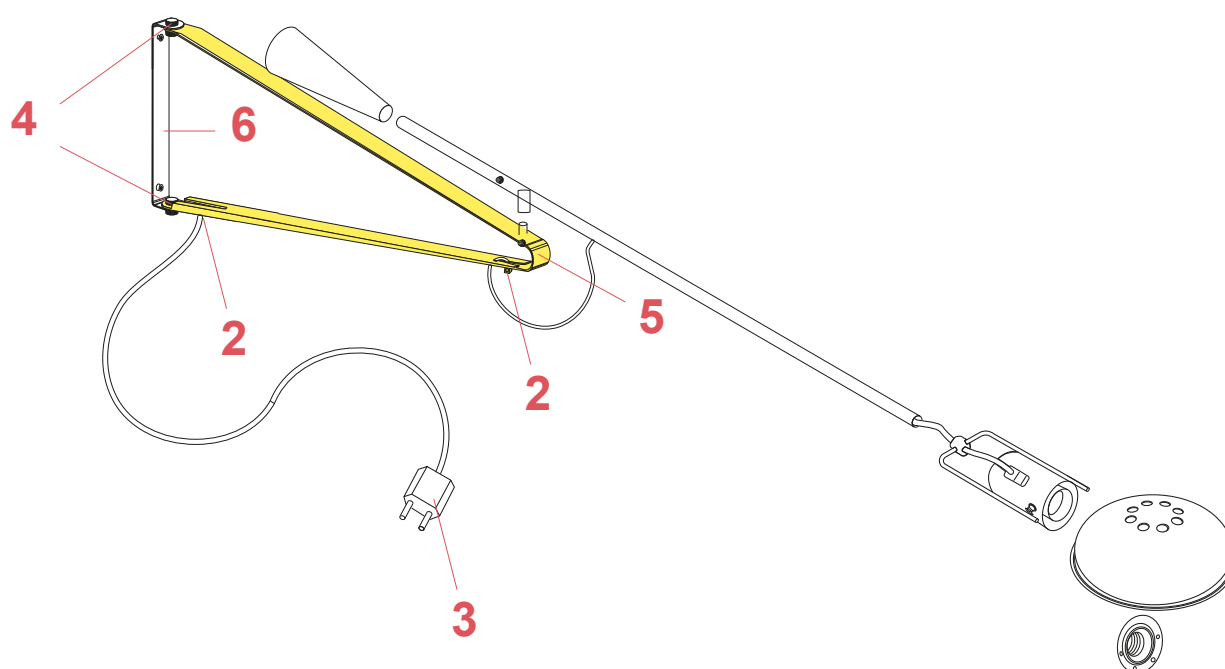


Fig.1

To assemble the triangle stem support (highlighted in yellow in the image), it is necessary:

Disconnect the wires in the plug (3) in a way to free the cable from the plug;

Remove the triangle support (5) from the wall attachment (6) by unfastening the upper and lower screws (4);

Unfasten the two cable clamps (2) screws and slide the electrical cable out from the cable clamps on the triangle support.

Replace the triangle support and re-assemble back all the components.

265 A0300030

EN

## RF11719

SCREWS BAG GROUP STM3X 3 CE C.10 P



WARNING! When installing and whenever acting on the appliance, ensure that the power supply has been switched off.  
For the installation of the spare-part, it is necessary to consult a qualified electrician.

©2021 Flos - All rights reserved - [www.flos.com](http://www.flos.com)  
Flos reserves the right to introduce any changes to its own models, without prior notice.