

MIDJ  
in Italy

# Nuvola PBL

design Midj R&D

Nuvola PBL armchair with steel frame completely upholstered in hide, regenerated hide, leather, ecoleather, fabric or custom's fabric.

Available with white or graphite lacquered legs and for the leather, ecoleather and fabric version possibility to upholster the back face with a different fabric.



## Finishing and Materials

### Structure



White Steel



Grafite Steel

### Coating



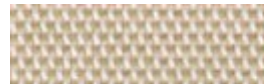
**Long Life Fabric**  
13 colors



**Mirage Fabric**  
16 colors



**Natural Wool Fabric**  
15 colors



**Pix Fabric**



**Hot Fabric**  
13 colors



**Bubble fabric**  
14 colors



**Magic Ecoleather**  
17 colors



**Inca Ecoleather**  
17 colors



**Vintage Ecoleather**  
4 colors



**Special Leather**  
8 colors



**Fiore Leather**  
15 colors



**Vintage Leather**  
4 colors



**Rigenerated Hide**  
10 colors



**Hide**  
19 colors

## Dimensions



Dimension	cm	inch
A	87	34.3

Dimension	cm	inch
B	60	23.6
C	52	20.5
D	47	18.5
E	64	25.2

## Volumetric Details

**Weight** 11.5  
**Volume** 0.28 mc  
**Package** 1  
**Stackable** 4 pieces

## Downloads

**Nuvola brochure (pdf)** - <http://www.midj.com/images/uploads/resources/nuvola.pdf>

## Materials Certifications

Mirage Fabric	UNI EN ISO 12947, ISO 12945-2, UNI EN ISO 13934, UNI EN ISO E05-E06, EN ISO 105X12, UNI EN ISO 105 E04, EN ISO 105 B02, UNI EN ISO 105 D01, UNI EN 20105-C01, UNI 8423.
Natural Wool Fabric	CATAS N. 86473/1 25/10/07; CATAS N. 85687/1 28/09/07; BS 5852-1/79; BS 5852-1:1979
Hot Fabric	FIRE RETARDANT FABRIC: BS5852:2006 (p. 11 CRIB 5) EN1021-1 EN1021-2 UNI 9175:2010 - classe 1 im COMPOSITION: 100% PES MARTINDALE 45'000 CICLI / CYCLES
Bubble fabric	FIRE RETARDANT FABRIC: BS5852:2006 (p. 11 CRIB 5) EN1021-1 EN1021-2 UNI 9175:2010 - classe 1 im COMPOSITION: 100% PES MARTINDALE 35'000 CYCLES
Magic Ecoleather	BS 5852-1:1979
Inca Ecoleather	UNI 9175:1987
Fiore Leather	BS 5852 parte 1; ISO 5402>50000 cicli; ISO 105B02 ? 5; ISO 3377-1 ?20 N; ISO 11644 ? 2.5 N/Cm; EN 1021/1-2; EN ISO 17233 -20°; IMO RES A 6528(16)
Vintage Leather	UNI EN ISO 105 B02 ?3; ISO 5402>50000 cicli; ISO 3377-1?20; UNI EN ISO 11640 Secco - Dry 50 c ?4 Umido - Wet 20 c ? 3; Sudore - Sweat 20 c ? 3