

P47 CT-S Coffee Table

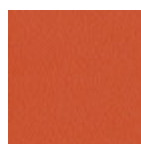
design Franco Poli, 2021



The P47 coffee table is a piece of furniture that speaks of style and functionality in the most refined environments. With a transversal look, thanks to the possibility of chromatic customization, it adds a touch destined to be noticed.

Colors and Materials

Structure



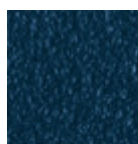
Papaya orange steel



Light blue steel



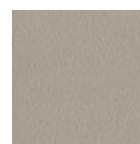
White steel



Ocean blue steel



Bronze Steel



Ash metal



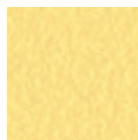
Sand steel



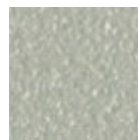
Fango steel



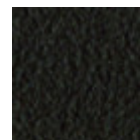
Golden yellow metal



Pastel yellow steel



Light grey steel



Brown steel



Black steel



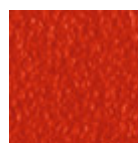
Ocher steel



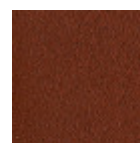
Golden Champagne



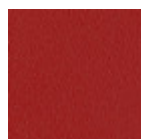
Facepowder pink
steel



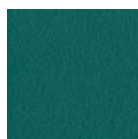
Red steel



Red bulgaro
textured metal



Cherry red metal



Pine green steel



Sage green steel



Black Nickel

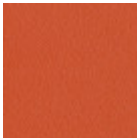


Pink Gold

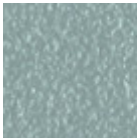


Golden bronze

Coating



Papaya orange steel



Light blue steel



White steel



Ocean blue steel



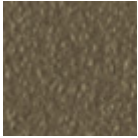
Bronze Steel



Ash metal



Sand steel



Fango steel



Golden yellow metal



Pastel yellow steel



Light grey steel



Brown steel



Black steel



Ocher steel



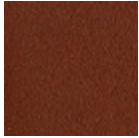
Golden Champagne



Facepowder pink steel



Red steel



Red bulgaro textured metal



Cherry red metal



Pine green steel



Sage green steel



Black Nickel



Pink Gold



Golden bronze

Extensions

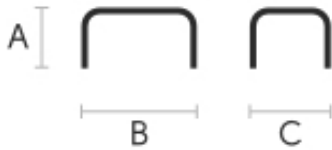


TK Hide
9 Colors



Tuscan hide
3 Colors

Dimensions



	cm	inch
A	60	23.6
B	40	15.7
C	38	15