



Alexander

design Midj R&D, 2018

Extendable table with four legs base in lacquered steel. Top in antiscratch glass or crystalceramic.



Finishing and Materials

Base



Sand Steel

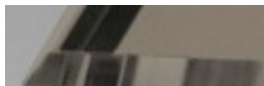


Grafite Steel



Brown Steel

Top



Matt Sand Antiscratch Glass



Matt Graphite Antiscratch Glass



Lead Crystalceramic



Cement Savoia Crystalceramic

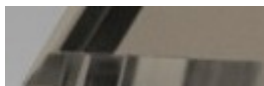


Emperador Marble Crystalceramic



Oxide Sand Crystalceramic

Extensions



Matt Sand Antiscratch Glass



Matt Graphite Antiscratch Glass



Lead Crystalceramic



Cement Savoia Crystalceramic

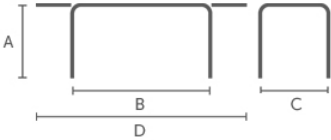


Emperador Marble Crystalceramic



Oxide Sand Crystalceramic

Dimensions



Volumetric Details

Weight 112
Volume 0.44 mc
Package 4

Dimension	A (cm) (inch)	B (cm) (inch)	C (cm) (inch)	D (cm) (inch)
160x90	75	160	90	240
	(29.5)	(63)	(35.4)	(94.5)
200x100	75	200	100	300
	(29.5)	(78.7)	(39.4)	(118.1)

Gallery

