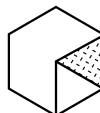


Pointhouse

TATA

Design **Arter&Citton**

Scheda tecnica
/ Technical sheet



archiproducts®

DESIGN AWARDS

—
WINNER 2018

Sedia in tubolare tagliato a laser con sistema d'innesto e fissaggio dello schienale in pressofusione di alluminio

Il nome della sedia prende spunto dalla sua estetica, che ci riporta ai primi anni nelle aule di scuola; è una metafora quindi della crescita di Pointhouse e della nostra proiezione per il futuro.

La struttura è in acciaio tagliato a laser con giunto in pressofusione di alluminio, sul quale monta lo schienale con un meccanismo a scomparsa. È una sedia moderna che ben si adatta a vari ambienti della casa, così come risulta perfettamente adeguata anche a spazi pubblici, quali ristoranti, hotel, bar, ecc.

La versatilità e la funzionalità di Tata è accentuata dalla notevole varietà e combinazione di colori e materiali.

/ Chair with laser-cut tubular legs and die-casted aluminium backseat fastening system

The name of the chair comes from its looks, that brings us to the first years of school; in this way it's a metaphor for Pointhouse's growth and for our projection towards the future.

The structure is composed by laser-cut tubular metallic legs and die-casted aluminium backseat fastening system, with a hidden mechanism. It's a modern chair that very well adapts to the various spaces of the house, as well as perfectly suited for public spaces like restaurants, hotels, bars, etc.

Tata's versatility and functionality is accentuated by the great variety and combinations of colours and materials.

COMPOSIZIONI / COMPOSITIONS:

TATA 1 - POLIPROPILENE / TATA 1 - POLYPROPYLENE

TATA 1 - LEGNO / TATA 1 - WOOD

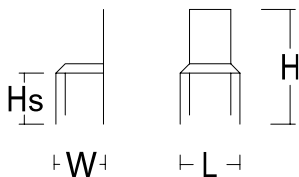
TATA 1 - TESSUTO / TATA 1 - FABRIC

TATA 1 - LEGNO + TESSUTO / TATA 1 - WOOD + FABRIC

TATA 1 - POLIPROPILENE + TESSUTO / TATA 1 - POLYPROPYLENE + FABRIC

MISURE / SIZE:

L.43XW.51XHS.45XH.85



PESO & IMBALLO / WEIGHT & PACKING:



Numero colli
Boxes number

TATA 1

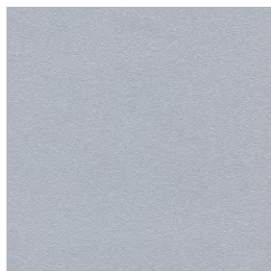
Box: 55x43 H.89 cm
m3 0,21
tot. Kg. per sedia
6,2

FINITURE / FINISHES:

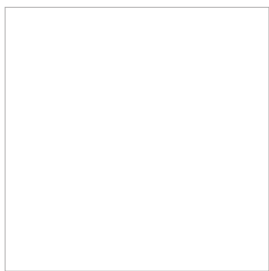
Struttura e gambe / Structure and legs:

Metallo verniciato

Painted metal



02 GRIGIO ALLUMINIO
ALUMINIUM GREY



06 BIANCO OPACO
MATT WHITE



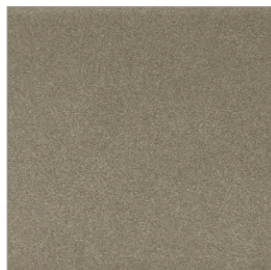
07 NERO OPACO
MATT BLACK



18 GRIGIO SILVER
SILVER GREY



22 TORTORA
DOVE GREY



24 BRONZO
BRONZO



25 ROSSO MATTONE
BRICK RED



0G GHISA
CAST IRON



0P GRIGIO PIOMBO OPACO
MATT LEAD GREY

FINITURE / FINISHES:

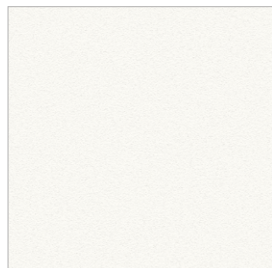
Seduta e schienale / seat and backseat:

Polipropilene / legno impiallacciato / tessuto
polypropylene / veneered wood / fabric

Polipropilene / Polypropylene

Polimero termoplastico caratterizzato da un elevato carico di rottura, una bassa densità, una buona resistenza termica e all'abrasione.

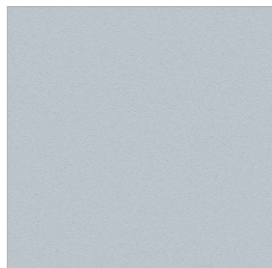
Thermoplastic polymer characterized by a high tensile strength, low density, good thermal and abrasion resistance.



E1 BIANCO
WHITE



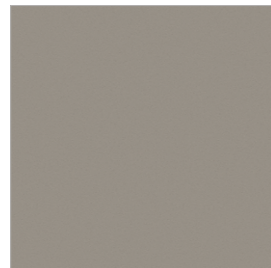
E3 GRAFITE
GRAPHITE



E4 GRIGIO CHIARO
LIGHT GREY



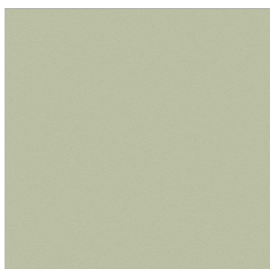
E7 NERO
BLACK



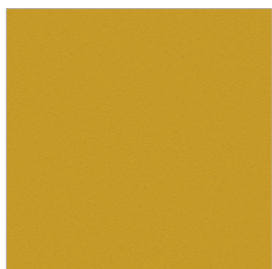
E9 TORTORA
DOVE GREY



EC ROSSO
RED



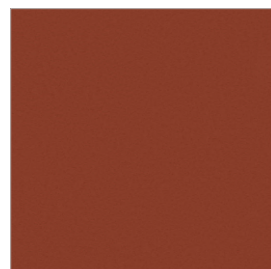
ED VERDE
GREEN



EE GIALLO
YELLOW



EF VERDE OLIVA
OLIVE GREEN



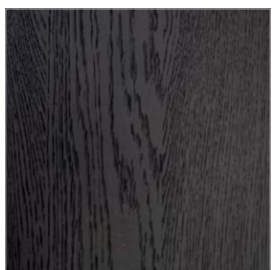
EG ROSSO MATTONE
BRICK RED

Legno impiallacciato

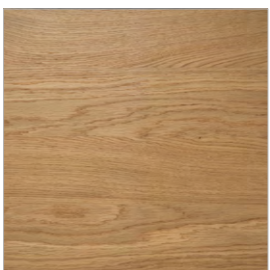
Si realizza utilizzando fogli di legno nobile di basso spessore, ricavati direttamente dai tronchi di miglior qualità. Vengono incollati e pressati su supporti di varia natura (es. pannelli di truciolare o mdf) e successivamente finiti nella tonalità desiderata.

/Veneered wood

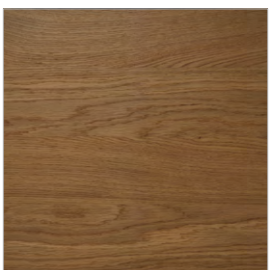
It is made using low thickness noble wood sheets, obtained directly from the best quality logs. They are glued and pressed on various types of supports (eg chipboard or MDF panels) and then finished in the desired shade.



35 ROVERE COTTO
BURNISHED OAK

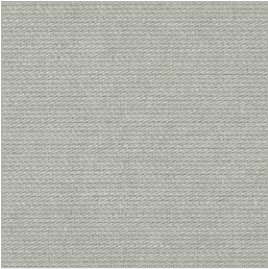


38 ROVERE GRAFITE
GRAPHITE OAK

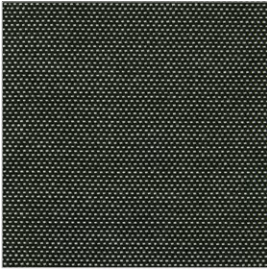


39 ROVERE NATURALE
NATURAL OAK

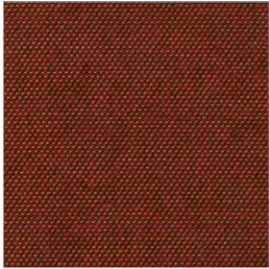
Tessuto Angel Trick / Angel Trick fabric



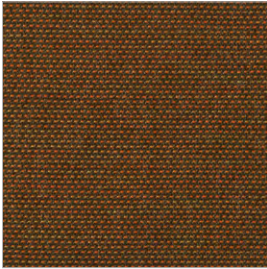
T101



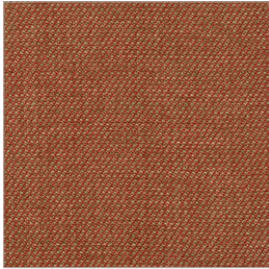
T221



T301



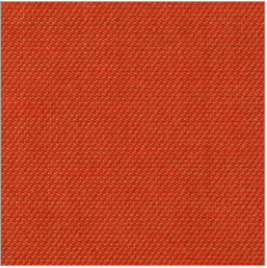
T302



T303



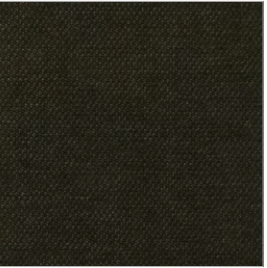
T304



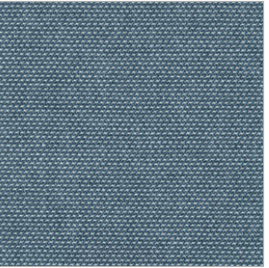
T306



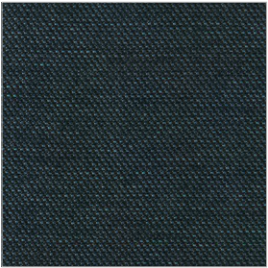
T400



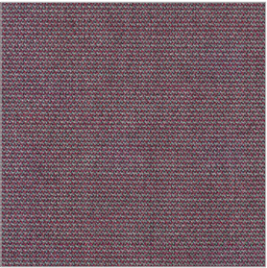
T406



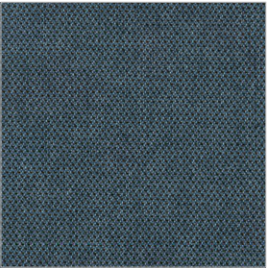
T701



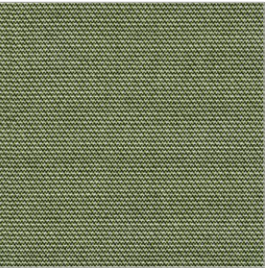
T702



T703



T704



T801



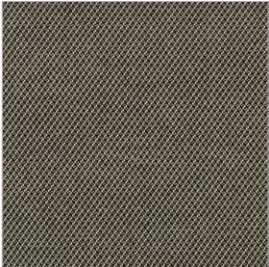
T803



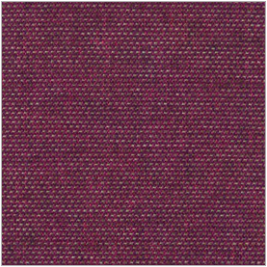
T204



T405



T602



T900



abitex

abitex srl
via del cristo 84
33044 manzano
ud – italy

t +39 0432 746060
www.abitex.eu
info@abitex.eu

angel trick 08163



IT

codice doganale

54072011.

utilizzo

tende, imbottiti.

caratteristiche

100% polipropilene, altezza cm \pm 140,
peso \pm 350 gr/m².

tintura

il prodotto é tinta in massa.

lunghezza pezze

circa 35 mtl.

abrasione

50.000 cicli, ISO 12947-2.

solidità alla luce

4-5, ISO 105 B02.

solidità allo sfregamento

secco 5, umido 4/5, ISO 105 X12.

resistenza alla cucitura

ordito 3 mm, trama 2 mm, ISO 13936-2.

pilling

4-5, ISO 12945-2.

resistenza al fuoco

1IM - UNI 9175; EN 1021 1/2; BS 5852 crib 5;
NF D 60 013; California TB 117-2013;
IMO FTP Code 307 part 8.

attenzione

sono ammesse leggere differenze di colore tra differenti partite.

EN

customs code

54072011.

use

curtains, upholstered furniture.

features

100% polypropylene, width cm \pm 140,
weight \pm 350 g/m².

dyeing

solution dyed product.

roll length

approx. 35 lm.

abrasion resistance

50.000 rubs, ISO 12947-2.

colour fastness to light

4-5, ISO 105 B02.

fastness to rubbing

dry 5, wet 4/5, ISO 105 X12.

seam slippage

warp 3 mm, weft 2 mm, ISO 13936-2.

pilling

4-5, ISO 12945-2.

fire resistance

1IM - UNI 9175; EN 1021 1/2; BS 5852 crib 5;
NF D 60 013; California TB 117-2013;
IMO FTP Code 307 part 8.

attention

slight colour differences between different batches are allowed.

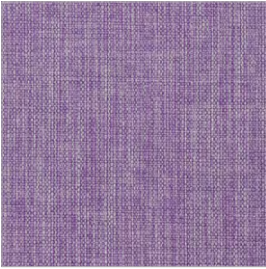


fireproof

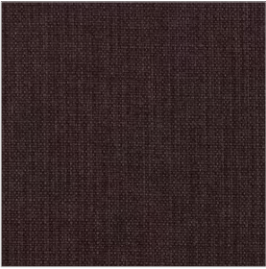


imo-med

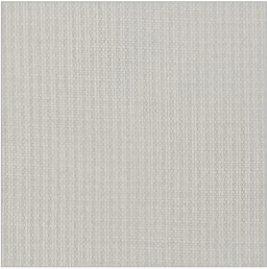
Tessuto Flash Nativa /Flash Nativa fabric



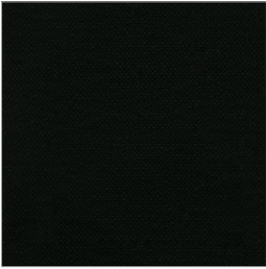
F001



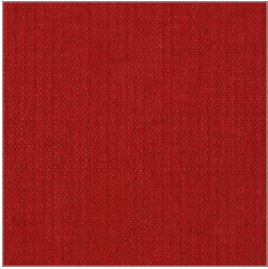
F002



F101



F200



F300



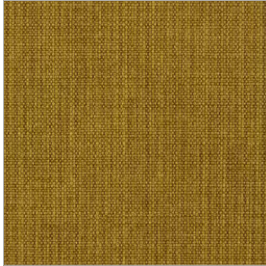
F301



F305



F403



F500



F601



F700



F705



F707



F800



F804



F402



F600



F602



abitex

abitex srl
via del cristo 84
33044 manzano
ud – italy

t +39 0432 746060
www.abitex.eu
info@abitex.eu

flash nativa

08091



IT

codice doganale

54072011.

utilizzo

imbottiti.

caratteristiche

100% polipropilene, altezza cm \pm 140,
peso \pm 320 gr/m².

tintura

il prodotto é tinta in massa.

lunghezza pezze

circa 35 mtl.

abrasione

> 70.000 cicli, ISO 12947-2.

solidità alla luce

4-5, ISO 105 B02.

solidità allo sfregamento

secco 5, umido 4/5, ISO 105 X12.

resistenza alla cucitura

ordito 3 mm, trama 3 mm, ISO 13936-2.

pilling

4-5, ISO 12945-2.

attenzione

sono ammesse leggere differenze di colore tra differenti partite.

EN

customs code

54072011.

use

upholstered furniture.

features

100% polypropylene, width cm \pm 140,
weight \pm 320 g/m².

dyeing

solution dyed product.

roll length

approx. 35 lm.

abrasion resistance

50.000 rubs, ISO 12947-2.

colour fastness to light

4-5, ISO 105 B02.

fastness to rubbing

dry 5, wet 4/5, ISO 105 X12.

seam slippage

warp 3 mm, weft 3 mm, ISO 13936-2.

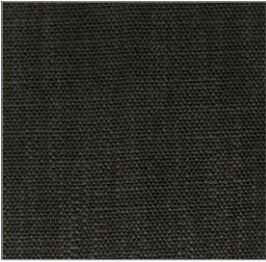
pilling

4-5, ISO 12945-2.

attention

slight colour differences between different batches are allowed.

Tessuto M.A.M. / *M.A.M. Fabric*



M205 ANTRACITE



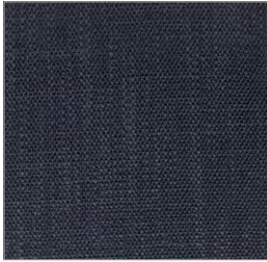
M616 FERRO



M027 CENERE



M019 PERLA



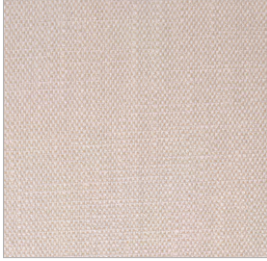
M014 BLU



M015 JEANS



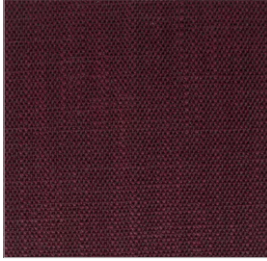
M016 AZZURRO



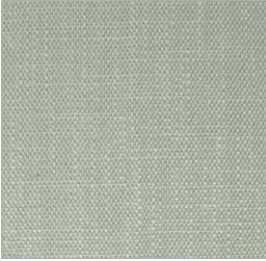
M105 CIPRIA



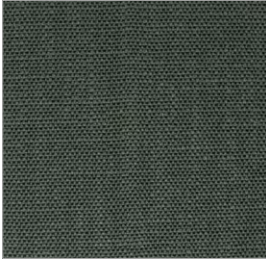
M023 MALVA



M080 AMARENA



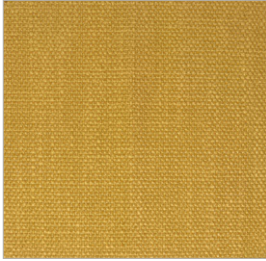
M021 PALUDE



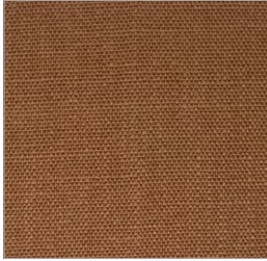
M204 MUSCHIO



M013 OTTANIO



M028 GIALLO



M007 TERRACOTTA



M002 BISCOTTO



M001 BEIGE



M200 NATUR



181 Favignana



IT

altezza

140 cm

composizione

87PL 13VI

peso mtl

840 gr

resistenza al pilling

4 - ISO 12945 - 2

resistenza all'abrasione

50000 metodo martindale BSI 5690

solidità alla luce

5 XENO TEST

note

Idrorepellente

EN

hight

140 cm

structure composition

87PL 13VI

weight mtl

840 gr

pilling resistance

4 - ISO 12945 - 2

abrasion resistance

50000 metodo martindale BSI 5690

fastness to light

5 XENO TEST

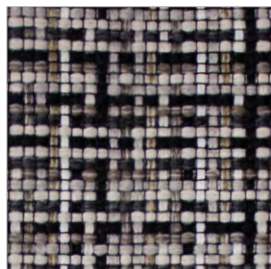
note

waterproof

Tessuto M.A.M. Idrorepellente / *Water repellent M.A.M. fabric*

Un ampliamento della gamma tessuti MAM, dedicata ai cuscini accessorio del programma TIPA.
Questi tessuti idrorepellenti rendono il cuscino perfetto per l'utilizzo in ambienti cucina come in ambienti outdoor.

*An extension of the MAM fabric range, dedicated to the accessory cushions of the TIPA program.
These water-repellent fabrics make the cushion perfect for use in both kitchen and outdoor environments.*



S018



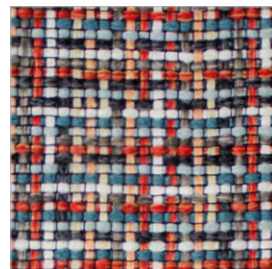
S021



S024



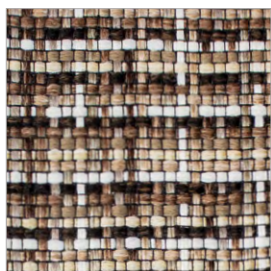
S080



S101



S130




S800



SCHEMA TECNICA

ART. 2468 MOSAICO

	VALORI	METODO
ALTEZZA	140 Cm	
COMPOSIZIONE	100 PL	
PESO MTL	520 Gr	
RESISTENZA AL PILLING	4	
RESISTENZA ALL'ABRASIONE	40000 cicli	metodo MARTINDALE BSI 5690
SOLIDITA' ALLA LUCE	4	XENO TEST

MODALITA' DI LAVAGGIO	
-----------------------	--

STABILITA' LAVAGGIO

Lavaggio a Secco	TRAMA %	0	ORDITO %	0
Lavaggio a Acqua	TRAMA %	0	ORDITO %	0

NOTE: IDROREPELENTE

ANTIMACCHIA