

design — Chiara Andreatti



Double L, 952 /TC
tavolino \ coffee table

Il tavolino Double L, ideale da posizionare di fianco a un divano o in sormonto con altri tavolini, è costituito da due gambe in lamiera d'acciaio nero goffrato che diventano due segni grafici uniti da un elemento centrale in ottone brunito. Il piano è disponibile in marmo, nelle finiture a collezione.

The Double L coffee table, ideal to be placed next to a sofa or overlapped with other tables, consists of two legs in embossed black steel sheet, joined by a central element in bronzed brass, which become two graphic signs, on which rests the marble top, in the finishes as per collection.

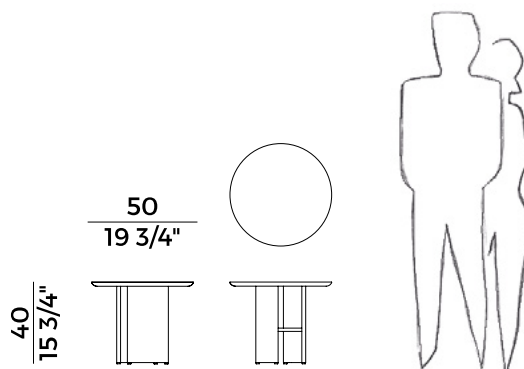
Informazioni tecniche \ *Technical information*

Descrizione tecnica \ *Technical description*

Tavolino con piano circolare e base in lamiera d'acciaio verniciata a polveri epossidiche finitura nero goffrato. Raccordo tra le basi in ottone brunito e piano in marmo. Finiture di collezione.

Coffee table with circular top and base in epoxy powder coated steel sheet with black embossed finish. Connection between the bases in bronzed brass and marble top. Finishes as per collection.

Dimensioni \ *Dimensions*



Imballaggi \ *Packaging*



PACKAGING

1 box = m³ 0.17

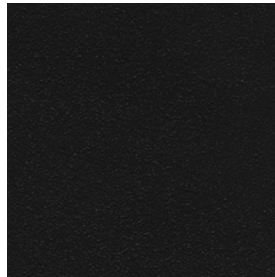
gross weight - Kg 18

Finiture \ *Finishes*

Finiture base \

Base finishes

Metallo \ *Metal*



Nero Goffrato \
Embossed Black

Finiture dettaglio \

Detail finishes

Metallo \ *Metal*

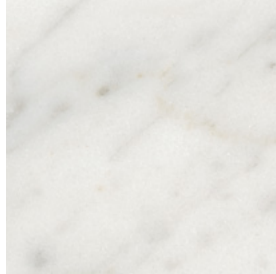


Ottone Brunito \
Bronzed Brass

Finiture \ *Finishes*

Finiture piano \ *Top finishes*

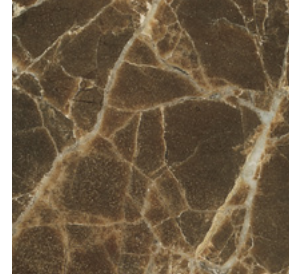
Marmo \ *Marble*



Bianco Carrara Opaco \
Matt White Carrara



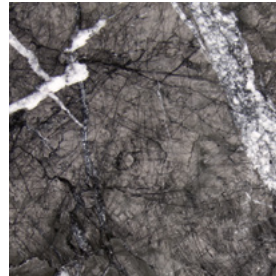
Bianco Carrara Lucido \
Glossy White Carrara



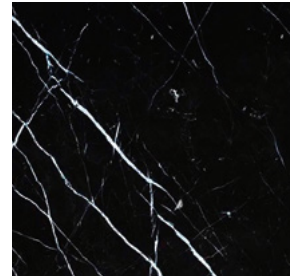
Dark Emperador \
Dark Emperador



Iron Silver \
Iron Silver



Grigio Carnico \
Grigio Carnico



Nero Marquinia \
Nero Marquinia