

## Milos sun lounger

by Jean-Marie Massaud

The Milos collection is the fruit of Vondom's first collaboration with French designer Jean-Marie Massaud. An example of how simplicity and functionality can be combined to create an elegant and comfortable outdoor furniture collection. Characterised by soft curves, this collection focuses on comfort. A collection that won the Red Dot Design Award 2024.



## Info

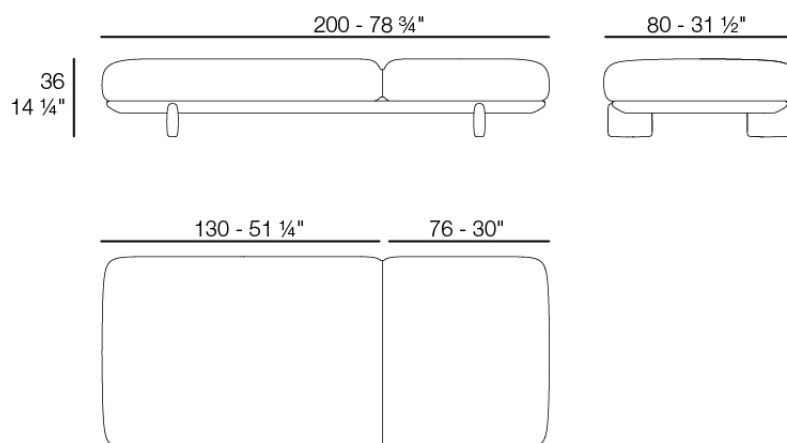
---

### Description

The sun lounger from the Milos collection harmoniously combines functionality and beauty. Precision manufactured, this sun lounger features a lacquered aluminium structure that ensures exceptional resistance to outdoor conditions.

Its iroko wood legs add a touch of elegance and warmth, while providing stability and a connection to nature.

Weight: 33 Kg



MILOS Tumbona  
MILOS Sun Chaise  
Ref. 70013

## Finishes

---

### finishes

---

#### POLYURETHANE

Ref. 70013

Furniture made of flexible polyurethane injected cold. This material possesses a high resilience and durability.

### fabric

---

#### GLAD

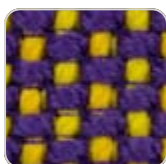
Ref. 70013CO



oro 1031



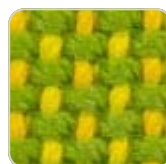
ocre 1051



sunset 1020



delhi 1038



lima 1030



aguacate 1028



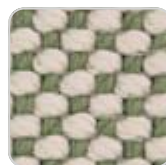
caribe 1004



bosc 1029



artemisa 1027



oasis 1007



oceano 1005



pruna 1045



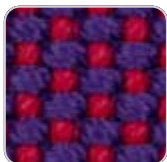
noa 1026



berry 1021



amatista 1011



vera 1019



afrodita 1013



grana 1046



bacco 1034



dahlia 1035



wine 1012



foc 1052



hestia 1014



turquoise 1053



niord 1015



masai 1018



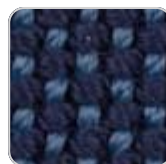
ultramar 1002



aquamarina 1003



esmeralda 1016



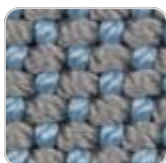
night 1024



galan 1025



eclipse 1023



perla 1006



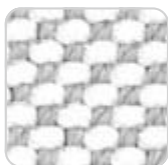
calipso 1017



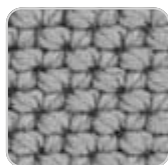
snow 1041



# VONDOM



iceberg 1037



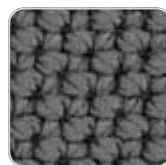
steel 1042



moon 1040



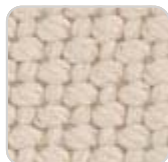
granito 1008



grey 1043



anthracite 1044



ecru 1047



dessert 1033



taupe 1048



terra 1039



duna 1009



moka 1010



chocolate 1050

Soft and cozy fabric suitable for indoor and outdoor use.

## VARM

Ref. 70013CO



green+crema  
1064



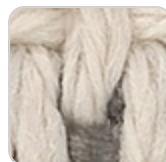
crema+blue 1063



blue jeans 1071



tortora+crema  
1070

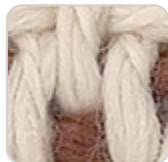


crema+gray 1062

# VONDOM



purjai red 1069



crema+ purjai red  
1061



crema 1068



crema+modo  
green 1060



blue+crema 1067



black+crema  
1066



purjai+crema  
1065

Soft and cozy fabric suitable for indoor and outdoor use.

## HYGGE

Ref. 70013CO



crema 1080



blue 1083



black 1082



gray 1081

Soft and cozy fabric suitable for indoor and outdoor use.

## KROLLET

Ref. 70013CO



krollet black 1926



krollet blue notte  
1925



krollet purjai 1924



krollet verde 1923



krollet crema  
1922



krollet white 1921

Soft and cozy fabric suitable for indoor and outdoor use.

## Ambients

---

