

Manta wooden swivel armchair

by Eugeni Quitllet

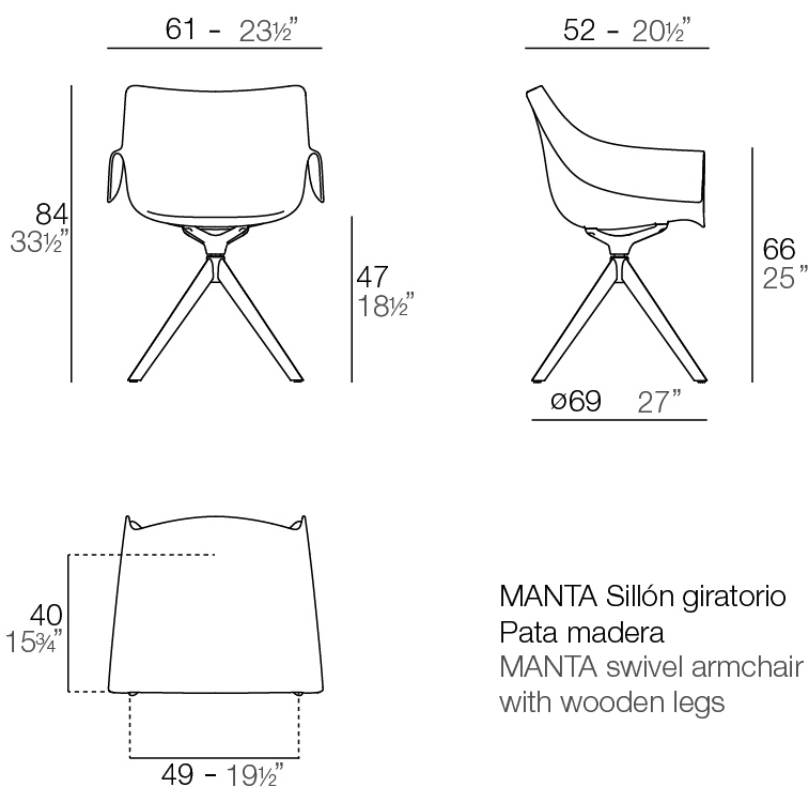
New outdoor and indoor chair collection. The versatile Manta chair adapts perfectly to any space, whether in a home, office, or public setting. This is all possible thanks to an interchangeable design made up of seats and bases to create countless combinations.



Info

Description

Weight: 9.3 Kg

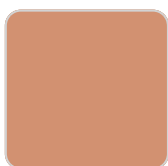


MANTA Sillón giratorio
Pata madera
MANTA swivel armchair
with wooden legs

Finishes

finishes

BASIC PP
Ref. 65055



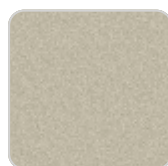
melon



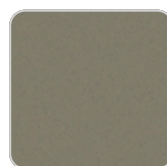
white



black



ecru



tortora

Available in various colors

Ambients

